

**Product Technical Data:**

**Model:** LFS-FLV / LFS-FLCV Post-Supported Trellis Canopy System

**Material:**  
 Aluminum: 6000 Series (Extruded), 5000 Series (Plate)  
 Carbon Steel: A-36 (Struct. Shapes), A-500 (Tube), A-36 (Plate)

**Standard Modular Sizes:**  
 Width: Unlimited  
 Projection: Unlimited

**Support Structure Options:**  
**Header Beam Assemblies:**  
 Material: Aluminum or Carbon Steel  
 Size and Spacing: As required for canopy configuration  
**Spreader Beam Assemblies: \*If Req'd\***  
 Material: Aluminum or Carbon Steel  
 Size and Spacing: As required for canopy configuration  
**Post Assemblies:**  
 Material: Aluminum or Carbon Steel  
 Size and Spacing: As required for canopy configuration  
 Base Plate: As required for canopy configuration

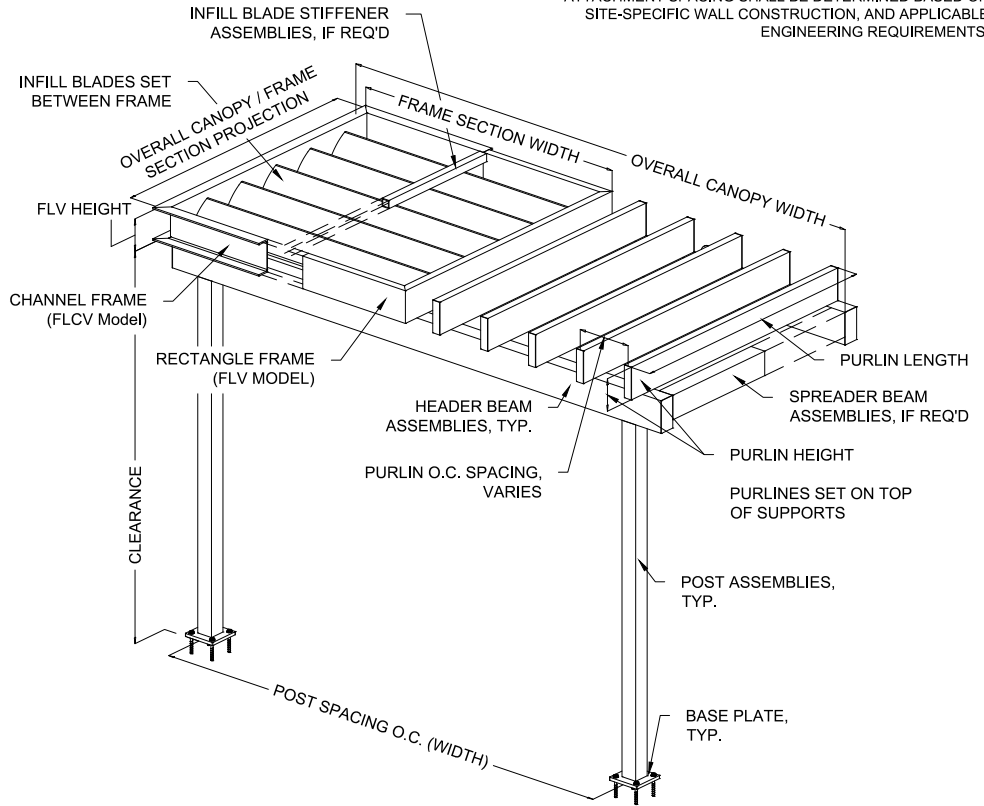
Canopy frame sections, and substructure assemblies are fully welded and shipped ready for field installation. Custom configurations available upon inquiry, and may require additional engineering.

**Finish Options:**  
 2-Part Polyurethane Paint Coating  
 Polyester Powder Coating  
 \*PVDF Coating

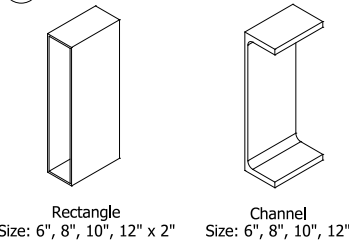
**Finish Warranty Options:**  
 2-Part Polyurethane Paint - 3-Year  
 High-Performance Polyester Powder Coating - 5-Year  
 (Available in standard colors or wood grain finish)  
 FEVE / PVDF Powder Coating - 10-Year  
 \*70% PVDF Liquid Coating - 20-Year

(\* ) Inquire for availability and pricing

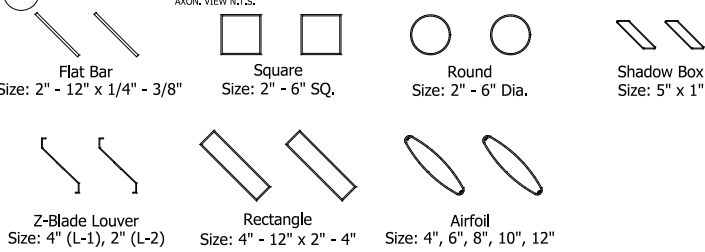
**GENERAL NOTE:**  
 PANEL-TO-BUILDING CONNECTION TYPE, HARDWARE, AND ATTACHMENT SPACING SHALL BE DETERMINED BASED ON SITE-SPECIFIC WALL CONSTRUCTION, AND APPLICABLE ENGINEERING REQUIREMENTS.



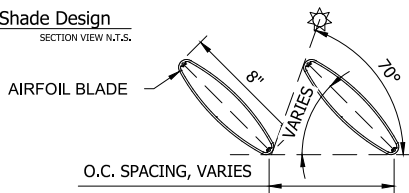
**1 Frame Options**  
AXON, VIEW N.T.S.



**3 Purlin / Blade Options**  
AXON, VIEW N.T.S.

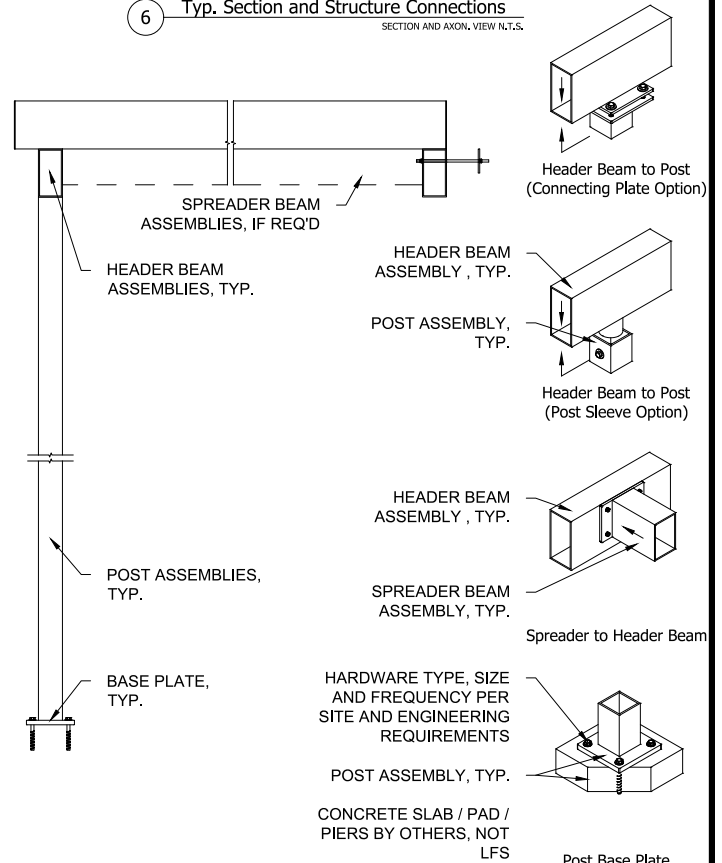


**4 Typ. Shade Design**  
SECTION VIEW N.T.S.



Canopy systems are engineered to provide up to 100% solar block at sun angles near 70° above the horizon. Custom spacing and configurations available upon request.

**6 Typ. Section and Structure Connections**  
SECTION AND AXON, VIEW N.T.S.



**LAWRENCE**  
**FABRIC & METAL STRUCTURES**  
 An Employee Owned Company  
 Your Imagination Is Our Vision  
 3509 Tree Court Industrial Blvd.  
 St. Louis, Missouri 63122  
 636.861.0100 636.861.0150 fax  
 THIS DRAWING IS THE PROPERTY OF  
 LAWRENCE FABRIC AND METAL STRUCTURES  
 INC. AND MAY NOT BE REPRODUCED WITHOUT  
 PERMISSION.

PRODUCT / MODEL TYPE		DRAWN BY	
TRELLIS METAL CANOPY		E. MOORE	
LFS-FLV / LFS-FLCV		DATE	
Purlins / Blades		02/10/2026	
*Post-Supported Substructure		REV.	SCALE
		0	N.T.S.
		SHEET NO.	
		1 OF 1	

# LOUVERED METAL PERGOLA & TRELLIS CANOPIES LFS-FLV

**LAWRENCE**  
FABRIC & METAL STRUCTURES



**"YOUR IMAGINATION IS OUR VISION"**



Lawrence Fabric & Metal Structures, Inc || 3509 Tree Court Industrial Blvd., St. Louis, MO 63122  
Phone: (636)861-0100 || Fax: (636)861-0150 || Email: [sales@lawrencefabric.com](mailto:sales@lawrencefabric.com) || Web: [www.lawrencefabric.com](http://www.lawrencefabric.com)



An Employee Owned Company