

Product Technical Data:

Model: LFS-FLV / LFS-FLCV Freestanding Pergola Canopy System

Material:
 Aluminum: 6000 Series (Extruded), 5000 Series (Plate)
 Carbon Steel: A-36 (Struct. Shapes), A-500 (Tube), A-36 (Plate)

Standard Modular Sizes:
 Width: Unlimited
 Projection: Unlimited

Support Structure Options:

- Header Beam Assemblies:**
 Material: Aluminum or Carbon Steel
 Size and Spacing: As required for canopy configuration
- Spreader Beam Assemblies: *If Req'd***
 Material: Aluminum or Carbon Steel
 Size and Spacing: As required for canopy configuration
- Post Assemblies:**
 Material: Aluminum or Carbon Steel
 Size and Spacing: As required for canopy configuration
- Base Plate:** As required for canopy configuration

Canopy frame sections, and substructure assemblies are fully welded and shipped ready for field installation. Custom configurations available upon inquiry, and may require additional engineering.

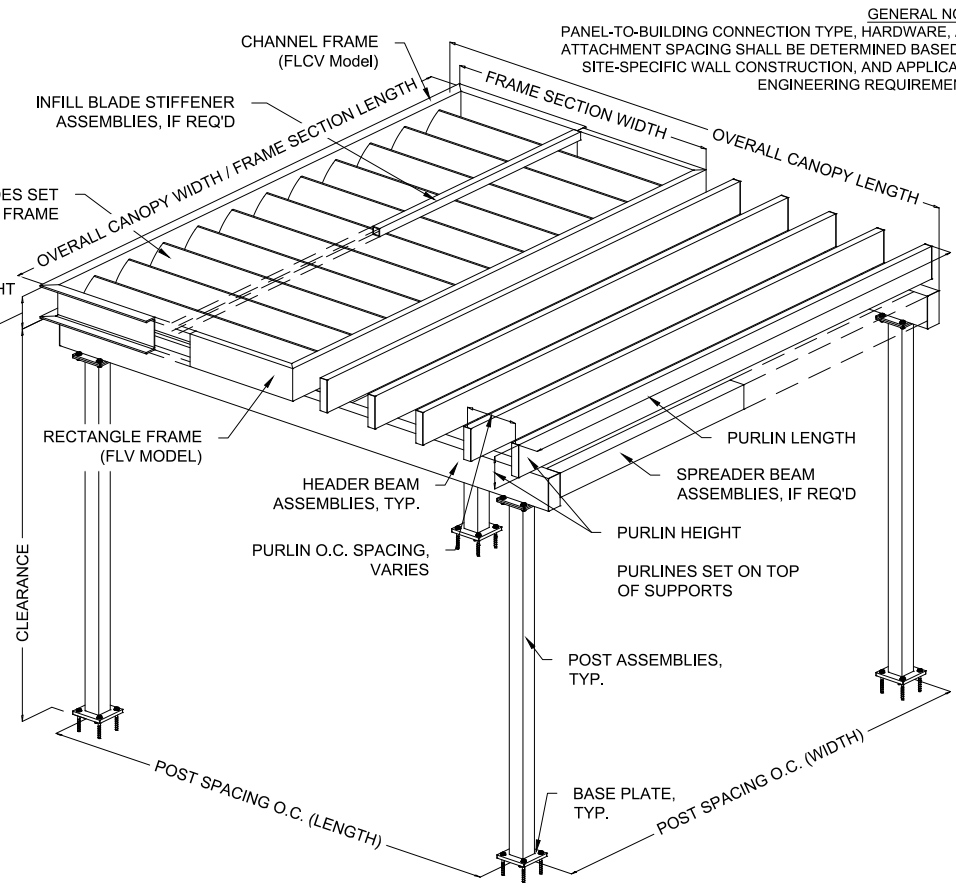
Finish Options:

- 2-Part Polyurethane Paint Coating
- Polyester Powder Coating
- *PVDF Coating

Finish Warranty Options:

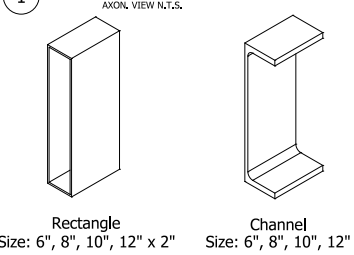
- 2-Part Polyurethane Paint - 3-Year
- High-Performance Polyester Powder Coating - 5-Year (Available in standard colors or wood grain finish)
- FEVE / PVDF Powder Coating - 10-Year
- *70% PVDF Liquid Coating - 20-Year

(*) Inquire for availability and pricing

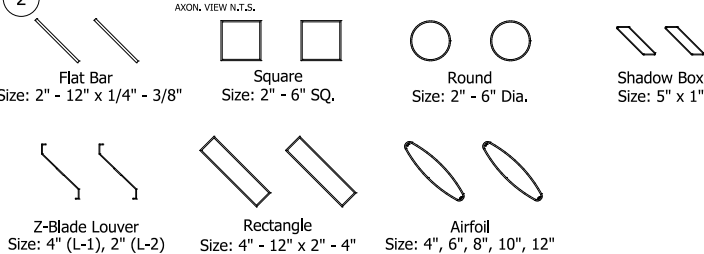


GENERAL NOTE:
 PANEL-TO-BUILDING CONNECTION TYPE, HARDWARE, AND ATTACHMENT SPACING SHALL BE DETERMINED BASED ON SITE-SPECIFIC WALL CONSTRUCTION, AND APPLICABLE ENGINEERING REQUIREMENTS.

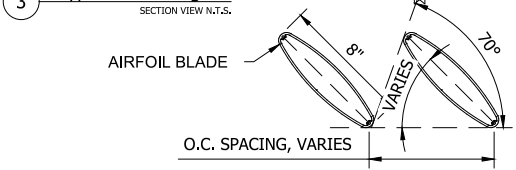
1 Frame Options



2 Purlin / Blade Options

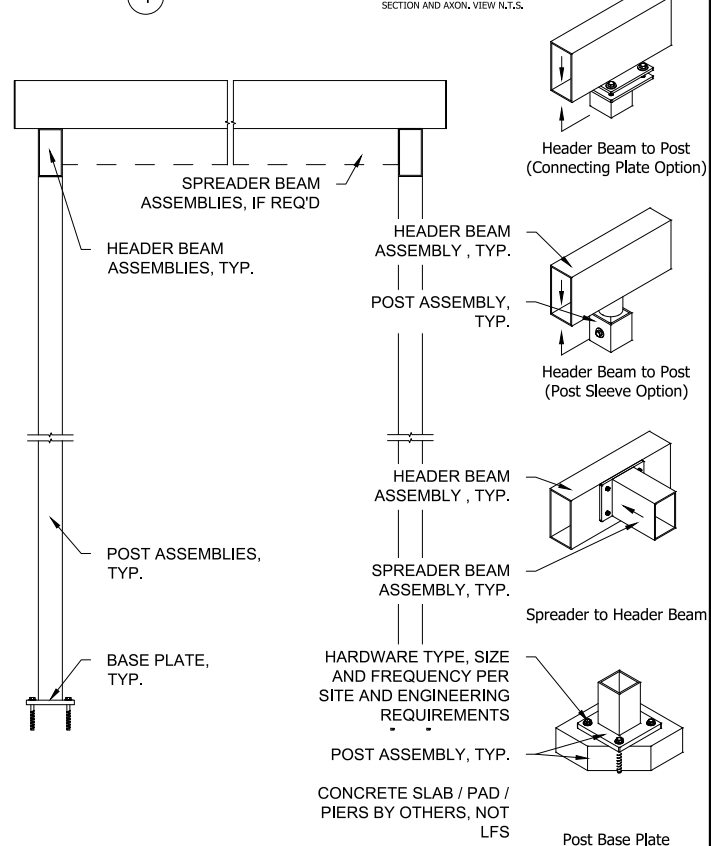


3 Typ. Shade Design



Canopy systems are engineered to provide up to 100% solar block at sun angles near 70° above the horizon. Custom spacing and configurations available upon request.

4 Typ. Section and Structure Connections



LAWRENCE
FABRIC & METAL STRUCTURES
 An Employee Owned Company
 Your Imagination Is Our Vision
 3509 Tree Court Industrial Blvd.
 St. Louis, Missouri 63122
 636.861.0100 636.861.0150 fax
 THIS DRAWING IS THE PROPERTY OF
 LAWRENCE FABRIC AND METAL STRUCTURES
 INC. AND MAY NOT BE REPRODUCED WITHOUT
 PERMISSION.

PRODUCT / MODEL TYPE		DRAWN BY	
PERGOLA METAL CANOPY		E. MOORE	
LFS-FLVA / LFS-FLCV		DATE	
Purlins / Blades		02/10/2026	
*Freestanding Substructure		REV.	SCALE
		0	N.T.S.
		SHEET NO.	
		1 OF 1	

LOUVERED METAL PERGOLA & TRELLIS CANOPIES LFS-FLV

LAWRENCE
FABRIC & METAL STRUCTURES



"YOUR IMAGINATION IS OUR VISION"



Lawrence Fabric & Metal Structures, Inc || 3509 Tree Court Industrial Blvd., St. Louis, MO 63122
Phone: (636)861-0100 || Fax: (636)861-0150 || Email: sales@lawrencefabric.com || Web: www.lawrencefabric.com



An Employee Owned Company