

**Product Technical Data:**

**Model:** LFS-FLA / LFS-FLCA Post-Supported Canopy System

**Material:**  
 Aluminum: 6000 Series (Extruded), 5000 Series (Plate)  
 Carbon Steel: A-36 (Struct. Shapes), A-500 (Tube), A-36 (Plate)

**Standard Modular Sizes:**  
 Width: Unlimited  
 Projection: Unlimited

**Support Structure Options:**  
**Header Beam Assemblies:**  
 Material: Aluminum or Carbon Steel  
 Size and Spacing: As required for canopy configuration  
**Spreader Beam Assemblies: \*If Req'd\***  
 Material: Aluminum or Carbon Steel  
 Size and Spacing: As required for canopy configuration  
**Post Assemblies:**  
 Material: Aluminum or Carbon Steel  
 Size and Spacing: As required for canopy configuration  
 Base Plate: As required for canopy configuration

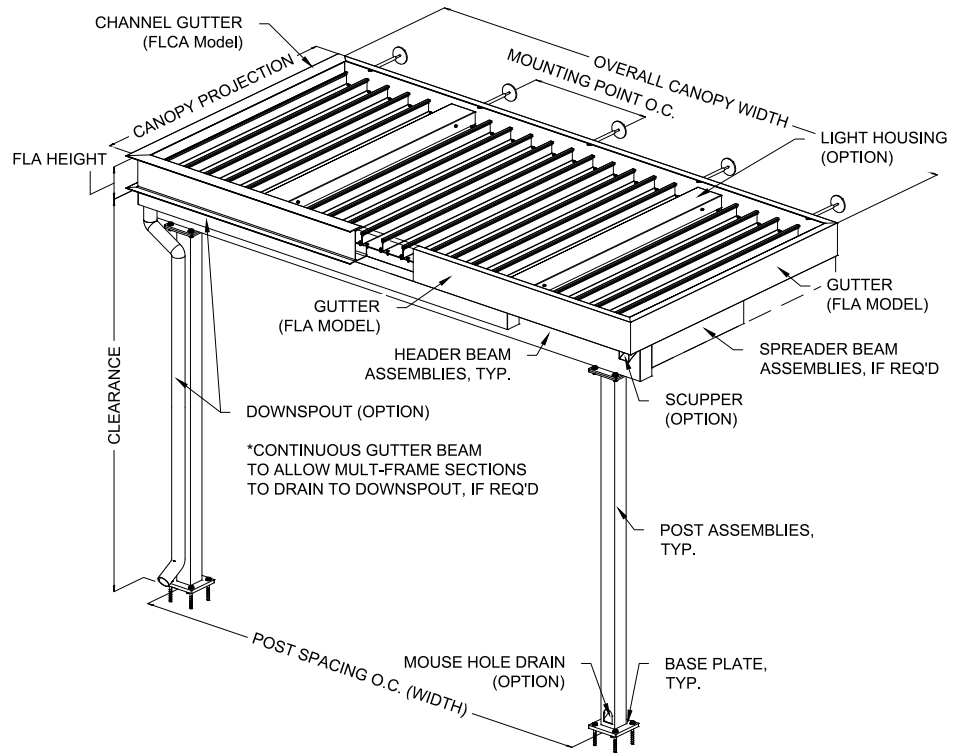
Canopy frame sections, and substructure assemblies are fully welded and shipped ready for field installation. Custom configurations available upon inquiry, and may require additional engineering.

**Finish Options:**  
 2-Part Polyurethane Paint Coating  
 Polyester Powder Coating  
 \*PVDF Coating

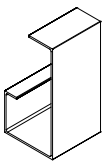
**Finish Warranty Options:**  
 2-Part Polyurethane Paint - 3-Year  
 High-Performance Polyester Powder Coating - 5-Year (Available in standard colors or wood grain finish)  
 FEVE / PVDF Powder Coating - 10-Year  
 \*70% PVDF Liquid Coating - 20-Year

(\* ) Inquire for availability and pricing

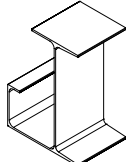
**GENERAL NOTE:**  
 PANEL-TO-BUILDING CONNECTION TYPE, HARDWARE, AND ATTACHMENT SPACING SHALL BE DETERMINED BASED ON SITE-SPECIFIC WALL CONSTRUCTION, AND APPLICABLE ENGINEERING REQUIREMENTS.



**1 Gutter Options**  
AXON, VIEW N.T.S.



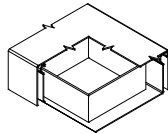
Gutter  
 Size: 6", 8", 10", 12" x 4"



Channel Gutter  
 Size: 8", 12" x 5-1/2"

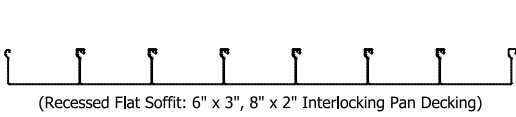


Formed Channel Fascia  
 Size: 12"-24" x 2"



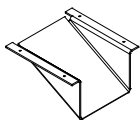
Std. Light Housing  
 Size: Std. 5" x 5" w/ Cap

**3 Decking Option**  
AXON, VIEW N.T.S.

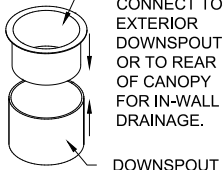


(Recessed Flat Soffit: 6" x 3", 8" x 2" Interlocking Pan Decking)

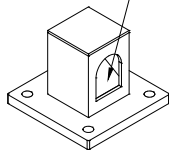
**4 Water Drainage Options**  
AXON, VIEW N.T.S.



Scupper  
 Size: Std. Formed



Downspout Stub  
 Size: Std. 3" Dia.



Mouse Hole Drain  
 Size: Std. Size

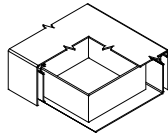
WATER WILL BE DISPERSED VIA INTEGRAL POST DRAINAGE TO MOUSE HOLE DRAIN AT GRADE. CONNECTION TO DRAINAGE PORT / STORM PIPING NOT BY LFS.

\*ALUM. POSTS ONLY\*

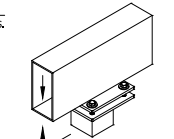
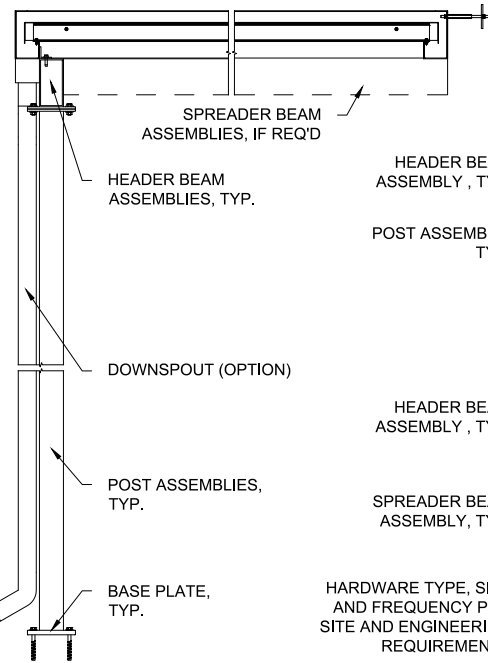
**2 Fascia Option**  
AXON, VIEW N.T.S.



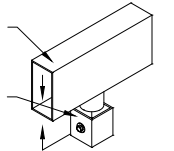
**5 Light Housing Option**  
AXON, VIEW N.T.S.



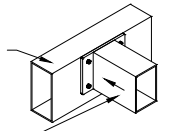
**6 Typ. Section and Structure Connections**  
SECTION AND AXON, VIEW N.T.S.



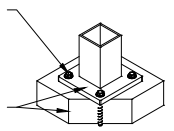
Header Beam to Post (Connecting Plate Option)



Header Beam to Post (Post Sleeve Option)



Spreader to Header Beam



POST ASSEMBLY, TYP.



**LAWRENCE**  
**FABRIC & METAL STRUCTURES**  
 An Employee Owned Company  
 Your Imagination Is Our Vision  
 3509 Tree Court Industrial Blvd.  
 St. Louis, Missouri 63122  
 636.861.0100 636.861.0150 fax  
 THIS DRAWING IS THE PROPERTY OF LAWRENCE FABRIC AND METAL STRUCTURES INC. AND MAY NOT BE REPRODUCED WITHOUT PERMISSION.

PRODUCT / MODEL TYPE		DRAWN BY	
FLAT METAL CANOPY		E. MOORE	
LFS-FLA / LFS-FLCA		DATE	
Flat Soffit Interlocking Pan Decking		02/10/2026	
*Post-Supported Substructure		REV.	SCALE
		1	N.T.S.
		SHEET NO.	
		1 OF 1	

# METAL CANOPIES

**LAWRENCE**  
FABRIC & METAL STRUCTURES



**"YOUR IMAGINATION IS OUR VISION"**



Lawrence Fabric & Metal Structures, Inc || 3509 Tree Court Industrial Blvd., St. Louis, MO 63122  
Phone: (636)861-0100 || Fax: (636)861-0150 || Email: sales@lawrencefabric.com || Web: www.lawrencefabric.com



An Employee Owned Company