

**Product Technical Data:**

**Model:** LFS-FLA / LFS-FLCA Flat Metal Canopy System

**Material:**  
 Aluminum: 6000 Series (Extruded), 5000 Series (Plate)  
 Carbon Steel: A-36 (Struct. Shapes), A-500 (Tube), A-36 (Plate)

**Standard Modular Sizes:**

Width: Unlimited  
 Projection: Unlimited, beam and post supports may be required, per site requirements.

Canopies are shipped in fully welded frame sections, with mechanically fastened supports ready for field installation. Custom configurations available upon inquiry, and may require additional engineering.

**Support Options:**

**Hanger Rods Assemblies:**  
 Rods: 3/4" or 1" Dia. Rod (Stainless Steel)  
 Spacing: As required per site requirements  
**Outrigger Assemblies:**  
 Tube: 3" x 3" HSS  
 Spacing: As required per site requirements

**Finish Options:**

2-Part Polyurethane Paint Coating  
 Polyester Powder Coating  
 \*PVDF Coating

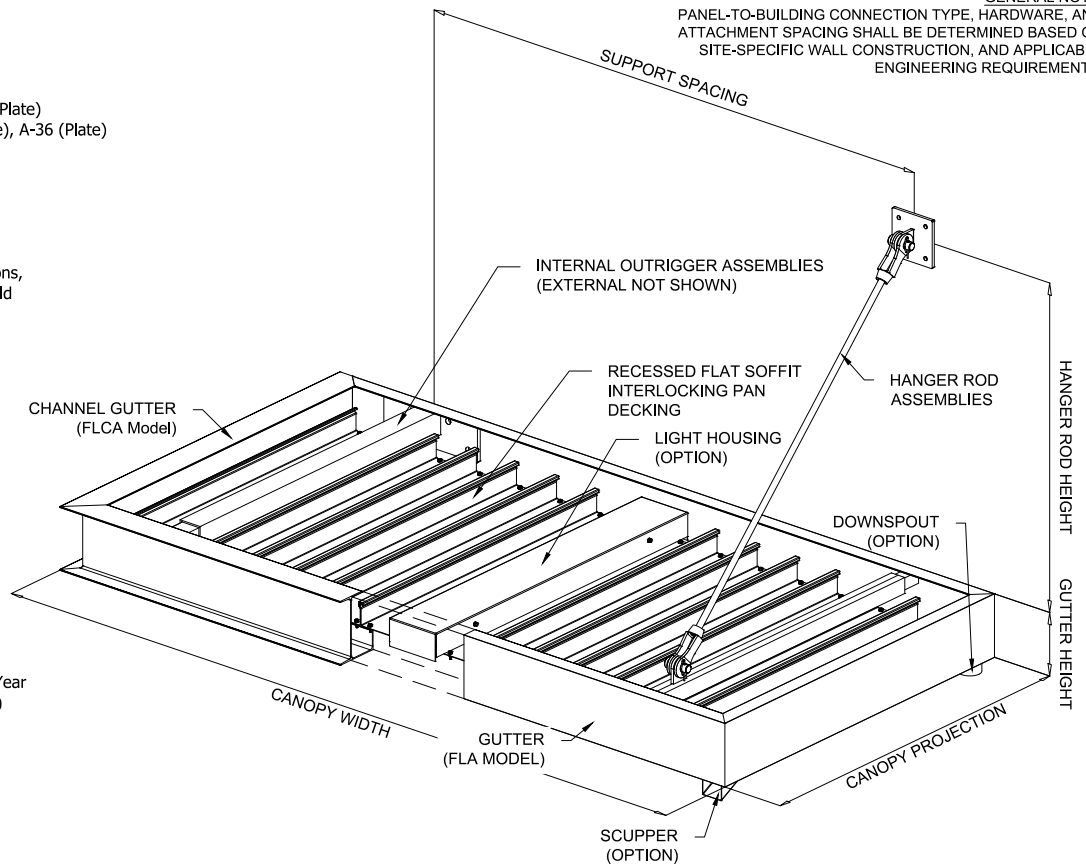
**Finish Warranty Options:**

2-Part Polyurethane Paint - 3-Year  
 High-Performance Polyester Powder Coating - 5-Year  
 (Available in standard colors or wood grain finish)  
 FEVE / PVDF Powder Coating - 10-Year  
 \*70% PVDF Liquid Coating - 20-Year

(\* Inquire for availability and pricing)

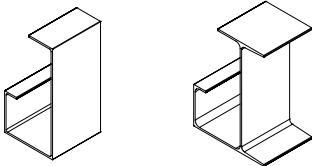
**GENERAL NOTE:**

PANEL-TO-BUILDING CONNECTION TYPE, HARDWARE, AND ATTACHMENT SPACING SHALL BE DETERMINED BASED ON SITE-SPECIFIC WALL CONSTRUCTION, AND APPLICABLE ENGINEERING REQUIREMENTS.



**1 Gutter Options**

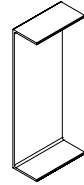
AXON, VIEW N.T.S.



Gutter Size: 6", 8", 10", 12" x 4"  
 Channel Gutter Size: 8", 12" x 5-1/2"  
 Formed Channel Fascia Size: 12"-24" x 2"

**2 Fascia Option**

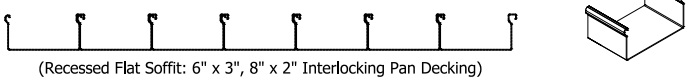
AXON, VIEW N.T.S.



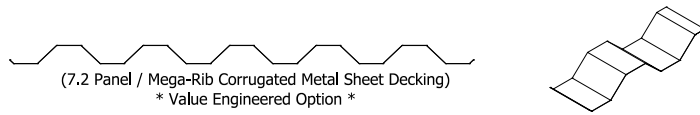
Formed Channel Fascia Size: 12"-24" x 2"

**3 Decking Options**

AXON, VIEW N.T.S.



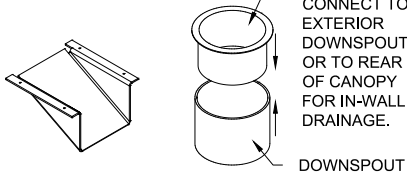
(Recessed Flat Soffit: 6" x 3", 8" x 2" Interlocking Pan Decking)



(7.2 Panel / Mega-Rib Corrugated Metal Sheet Decking)  
 \* Value Engineered Option \*

**4 Water Drainage Options**

AXON, VIEW N.T.S.

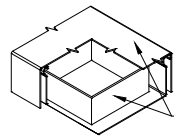


Scupper Size: Std. Formed

Downspout Stub Size: Std. 3" Dia.

**5 Light Housing Option**

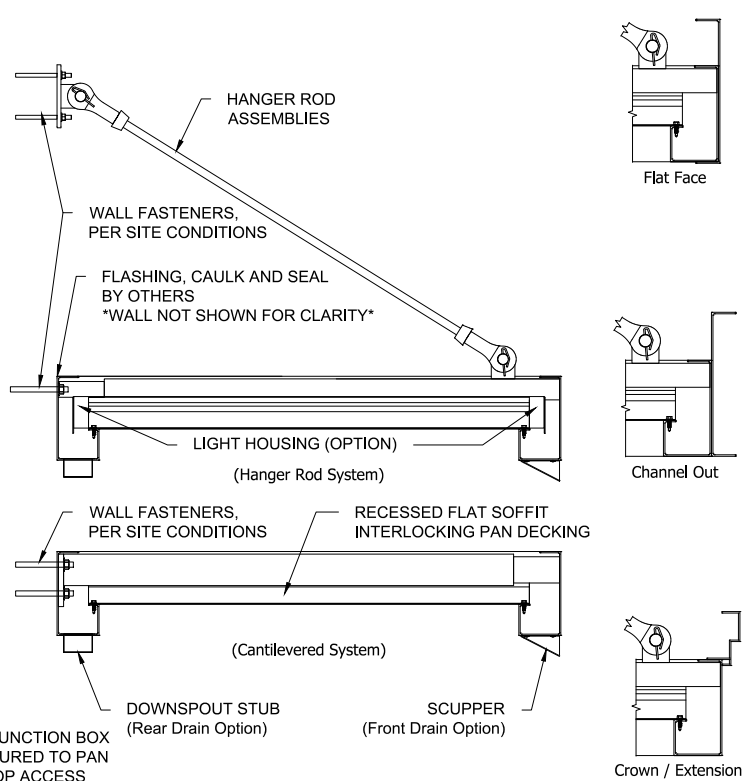
AXON, VIEW N.T.S.



Std. Light Housing Size: Std. 5" x 5" w/ Cap

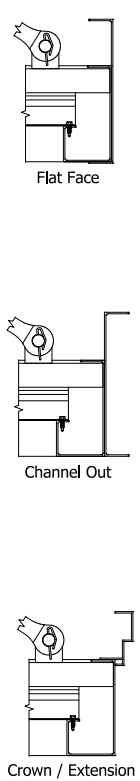
**6 Typ. Section**

SECTION VIEW N.T.S.



**7 Face Options**

SECTION VIEW N.T.S.



**LAWRENCE**  
**FABRIC & METAL STRUCTURES**  
 An Employee Owned Company  
 Your Imagination Is Our Vision  
 3509 Tree Court Industrial Blvd.  
 St. Louis, Missouri 63122  
 636.861.0100 636.861.0150 fax  
 THIS DRAWING IS THE PROPERTY OF  
 LAWRENCE FABRIC AND METAL STRUCTURES  
 INC. AND MAY NOT BE REPRODUCED WITHOUT  
 PERMISSION.

PRODUCT / MODEL TYPE		DRAWN BY	
FLAT METAL CANOPY		E. MOORE	
LFS-FLA / LFS-FLCA		DATE	
Flat Soffit Interlocking Pan Decking		02/10/2026	
*Hanger Rod / Outrigger Assemblies		REV.	SCALE
		2	N.T.S.
		SHEET NO.	
		1 OF 1	

# FLAT METAL CANOPIES

## LFS - FLA

**LAWRENCE**  
FABRIC & METAL STRUCTURES



**"YOUR IMAGINATION IS OUR VISION"**



Lawrence Fabric & Metal Structures, Inc || 3509 Tree Court Industrial Blvd., St. Louis, MO 63122  
Phone: (636)861-0100 || Fax: (636)861-0150 || Email: sales@lawrencefabric.com || Web: www.lawrencefabric.com



An Employee Owned Company

# FLAT METAL CANOPIES LFS - FLCA

**LAWRENCE**  
FABRIC & METAL STRUCTURES



**"YOUR IMAGINATION IS OUR VISION"**



Lawrence Fabric & Metal Structures, Inc || 3509 Tree Court Industrial Blvd., St. Louis, MO 63122  
Phone: (636)861-0100 || Fax: (636)861-0150 || Email: sales@lawrencefabric.com || Web: www.lawrencefabric.com



An Employee Owned Company