

**Product Technical Data:**

Model: LFS-FLD - Dock Canopy - Flat Metal Awning System

Material:  
Extruded Aluminum: 6063-T6

**Standard Modular Sizes:**

Max. Width: Up to 24'-0" sections  
Max. Projection: Up to 8'-0", beam and post supports may be required, per site requirements.

\*Canopies are shipped in fully welded frame sections, with mechanically fastened supports ready for field installation. Custom configurations available upon inquiry, and may require additional engineering.

**Support Options:**

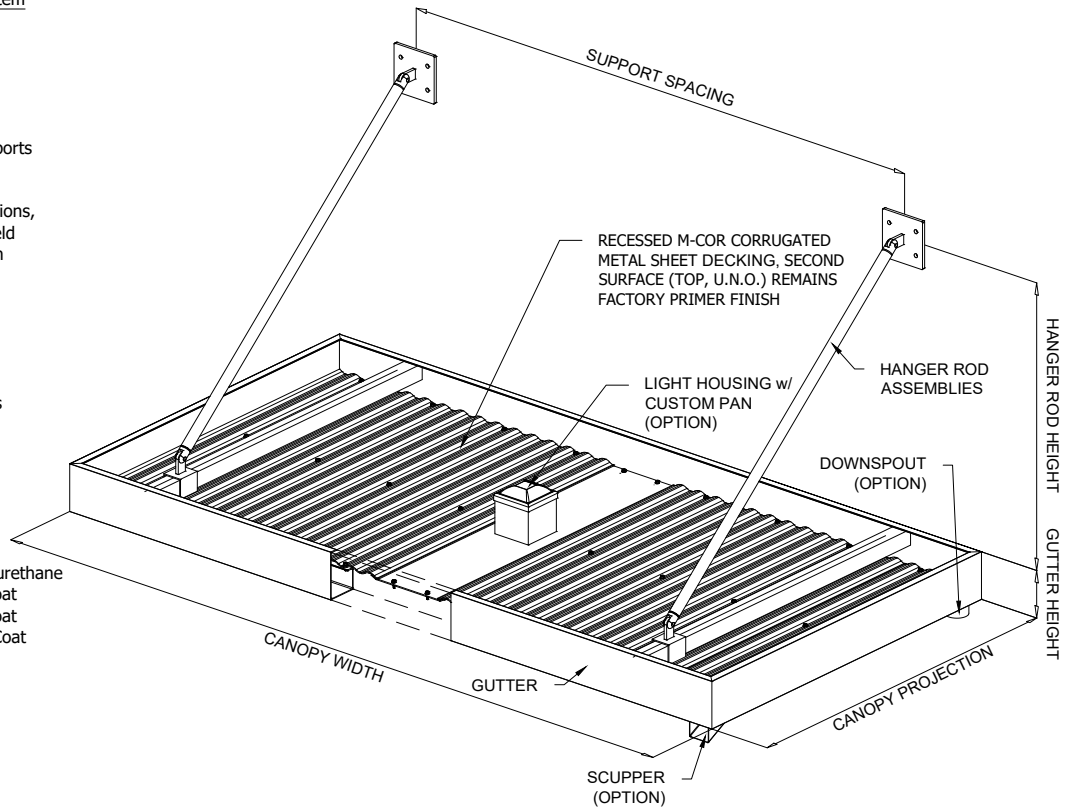
\*Hanger Rod Assemblies:  
Rods: 1" Dia. Rod (Aluminum)  
Brackets: 6" x 6" Plate (Aluminum)  
Spacing: As required per site requirements

**Finish Options:**

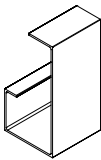
2-Part Polyurethane Factory Applied Paint  
\*Durable Polyester Powder Coat  
\*2 / 3-Coat PVDF

**Finish Warranty Options:**

AAMA 2603 1-Year Finish Warranty - 2-Part Polyurethane  
\*AAMA 2603 1-Year Finish Warranty - Powder Coat  
\*AAMA 2604 5-Year Finish Warranty - Powder Coat  
\*AAMA 2605 10-Year Finish Warranty - Powder Coat  
\*AAMA 2605 20-Year Finish Warranty - PVDF



**1 Gutter Options**  
AXON, VIEW N.T.S.

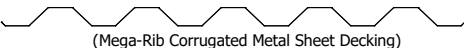


Gutter  
Size: 6" x 4"

**3 Decking Options**  
AXON, VIEW N.T.S.

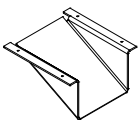


(M-Cor Corrugated Metal Sheet Decking)



(Mega-Rib Corrugated Metal Sheet Decking)

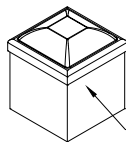
**4 Water Drainage Options**  
AXON, VIEW N.T.S.



Scupper  
Size: Std. Formed



Downspout Sleeve  
Size: Std. Dia.

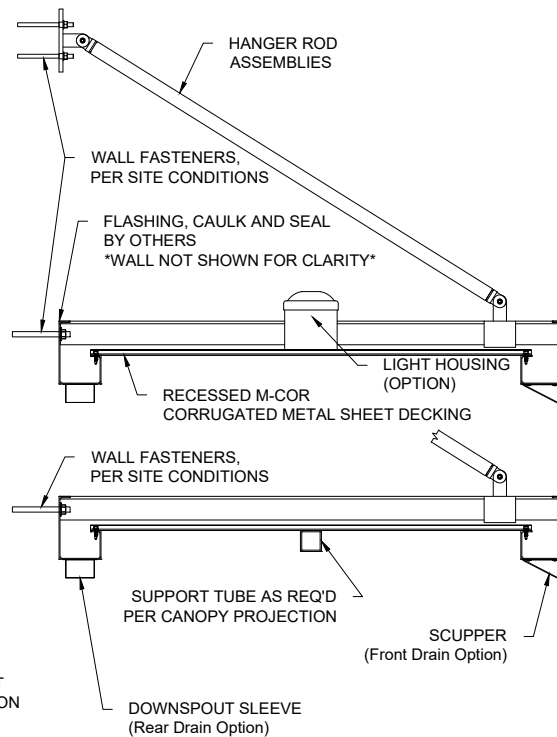


Std. Light Housing  
Size: Std. 5" x 5" w/ Cap

**5 Light Housing Option**  
AXON, VIEW N.T.S.

LARGER / CUSTOM LIGHT HOUSING AVAILABLE UPON REQUEST

**6 Typ. Section**  
SECTION VIEW N.T.S.



**LAWRENCE**  
FABRIC & METAL STRUCTURES  
An Employee Owned Company  
Your Imagination Is Our Vision  
3509 Tree Court Industrial Blvd.  
St. Louis, Missouri 63122  
636.861.0100 636.861.0150 fax  
THIS DRAWING IS THE PROPERTY OF  
LAWRENCE FABRIC AND METAL STRUCTURES  
INC. AND MAY NOT BE REPRODUCED WITHOUT  
PERMISSION.

PRODUCT / MODEL TYPE		DRAWN BY	
FLAT METAL AWNING		E. MOORE	
LFS-FLD		DATE	
Corrugated Metal Decking		08/01/2025	
Hanger Rod Assemblies		REV.	SCALE
		0	N.T.S.
		SHEET NO.	
		1 OF 1	

# FLAT METAL CANOPIES LFS-FLD

**LAWRENCE**  
FABRIC & METAL STRUCTURES



**"YOUR IMAGINATION IS OUR VISION"**



Lawrence Fabric & Metal Structures, Inc. || 3509 Tree Court Industrial Blvd., St. Louis, MO 63122  
Phone: (636)861-0100 || Fax: (636)861-0150 || Email: [sales@lawrencefabric.com](mailto:sales@lawrencefabric.com) || Web: [www.lawrencefabric.com](http://www.lawrencefabric.com)



An Employee Owned Company