

**Material:**

- extruded aluminum frame
- substrate options:
  - flat aluminum sheet
  - standing seam steel
  - corrugated steel

**Fabrication Method:**

- welded framework
- mechanically fastened sheeting

**Fasteners:**

- through bolt
- threaded rod with epoxy
- concrete anchor
- lag screws

**Underside Finish**

- open (millfinish frame and substrate)

**Width:**

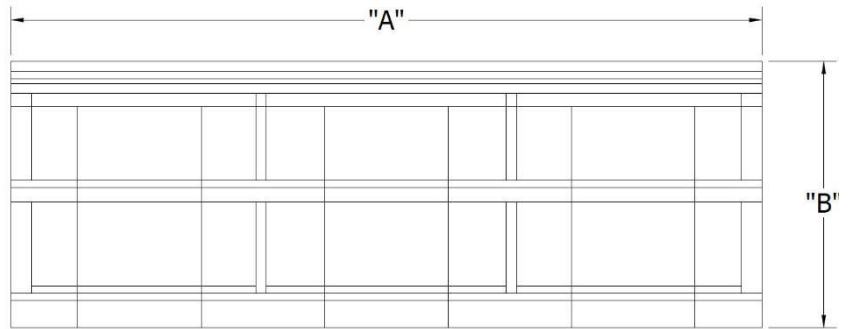
- unlimited

**Finish:**

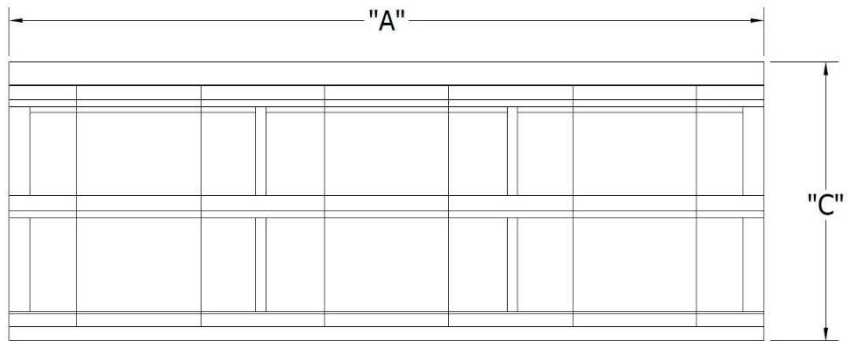
- 2-part Poly-Urethane Paint (Aluminum Sheet & Frame)
- AAMA 2603 Powder Coat (Aluminum Sheet & Frame)
- AAMA 2604 Powder Coat (Aluminum Sheet & Frame)
- AAMA 2605 Powder Coat (Aluminum Sheet & Frame)
- Kynar Finish (Standing Seam and Corrugated Sheet Aluminum Sheet & Frame)

**Projection:**

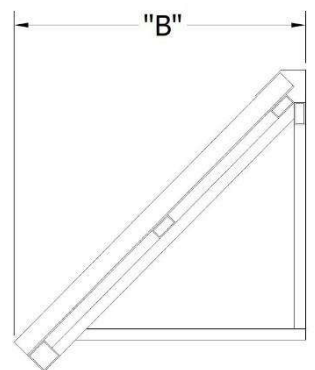
- up to 8' at 45° without posts
- > 8' requires support post



PLAN VIEW



FRONT VIEW

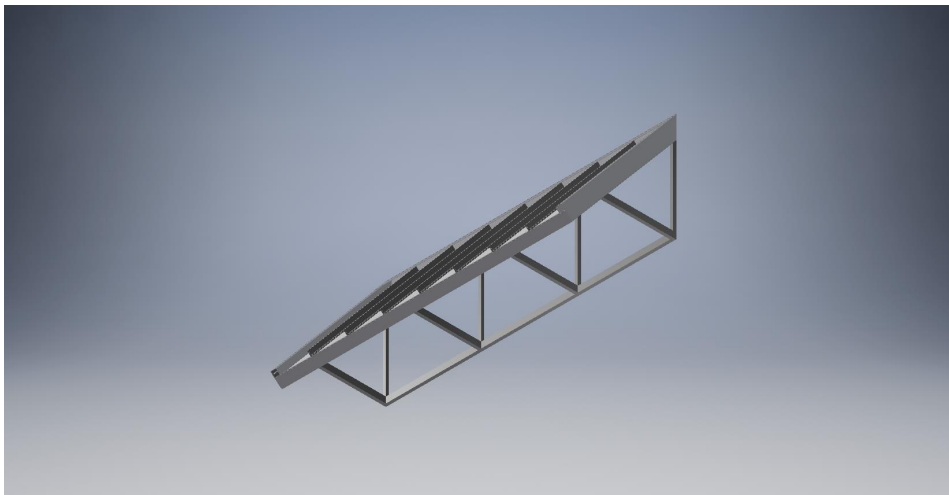
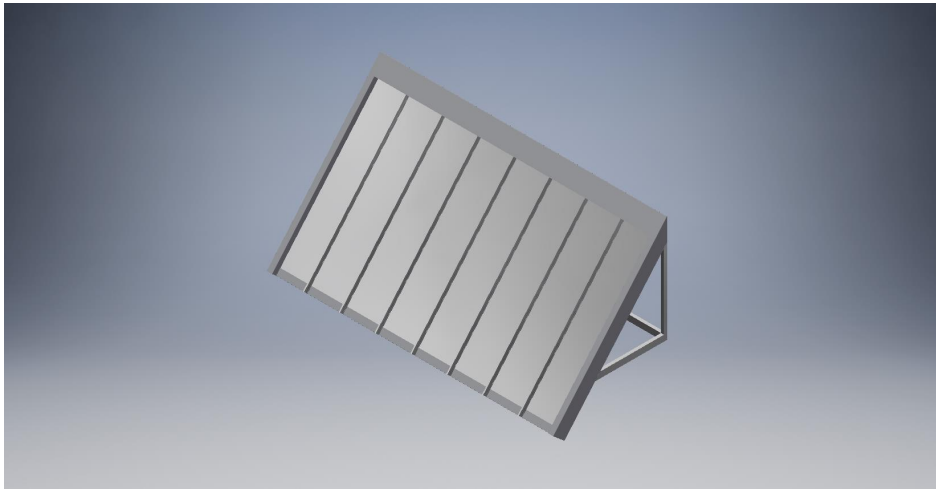


SIDE VIEW

Call for any further details including but not limited to material, temper, thickness, paint and design.



**LFS-SLP**



# STANDING SEAM CANOPIES LFS - SLP

**LAWRENCE**  
FABRIC & METAL STRUCTURES



**"YOUR IMAGINATION IS OUR VISION"**



Lawrence Fabric & Metal Structures, Inc || 3509 Tree Court Industrial Blvd., St. Louis, MO 63122  
Phone: (636)861-0100 || Fax: (636)861-0150 || Email: sales@lawrencefabric.com || Web: www.lawrencefabric.com



An Employee Owned Company