

**Model: LFS TR Without Box**

**Material:**

- extruded aluminum frame
- substrate options:
  - flat aluminum sheet
  - standing seam steel
  - corrugated steel

**Fabrication Method:**

- welded
- mechanically fastened

**Fasteners:**

- through bolt
- threaded rod with epoxy
- concrete anchor
- lag screws

**Underside Finish**

- open
- soffit

**Finish:**

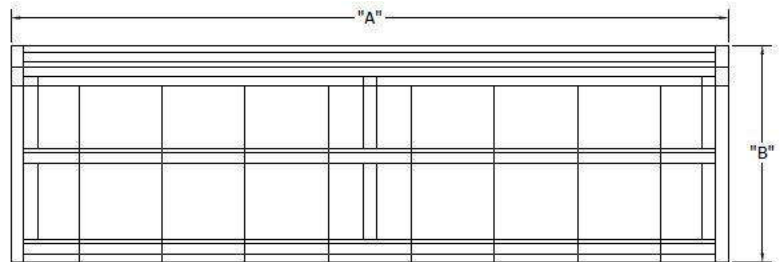
- AAMA 2603 2-part Poly-Urethane paint (Aluminum Sheet & Frame)
- AAMA 2603 Powder Coat (Aluminum Sheet & Frame)
- AAMA 2604 Powder Coat (Aluminum Sheet & Frame)
- AAMA 2605 Powder Coat (Aluminum Sheet & Frame)
- Kynar Finish (Standing Seam and Corrugated Sheet Aluminum Sheet & Frame)

**Width:**

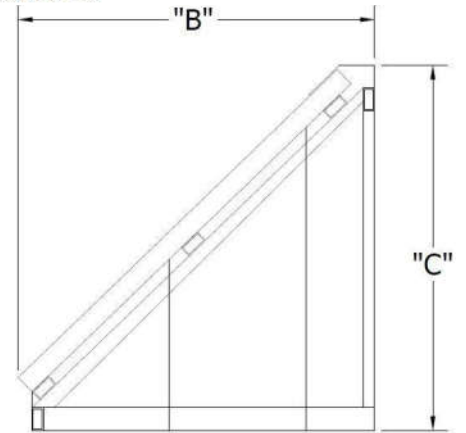
- Unlimited

**Projection:**

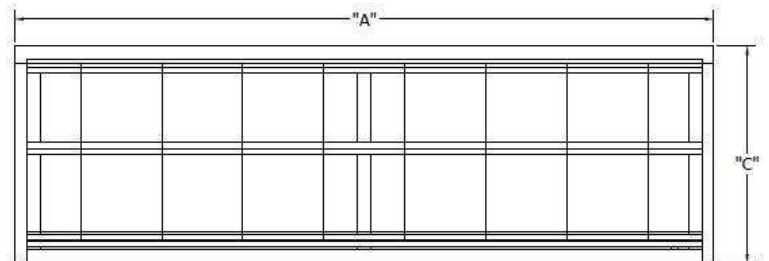
- 8' at 45° without posts
- over 8' with posts



PLAN VIEW



SIDE VIEW

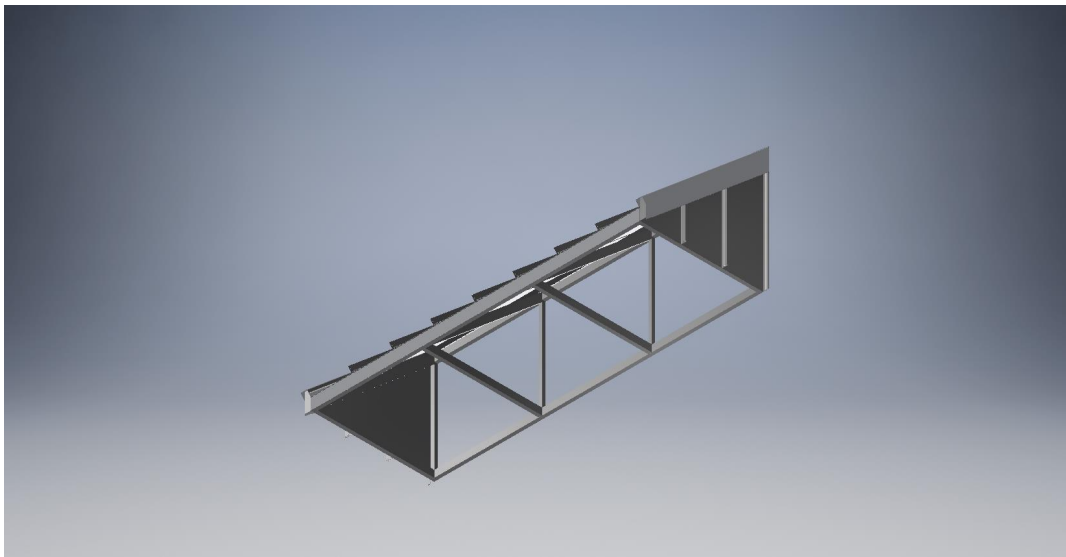
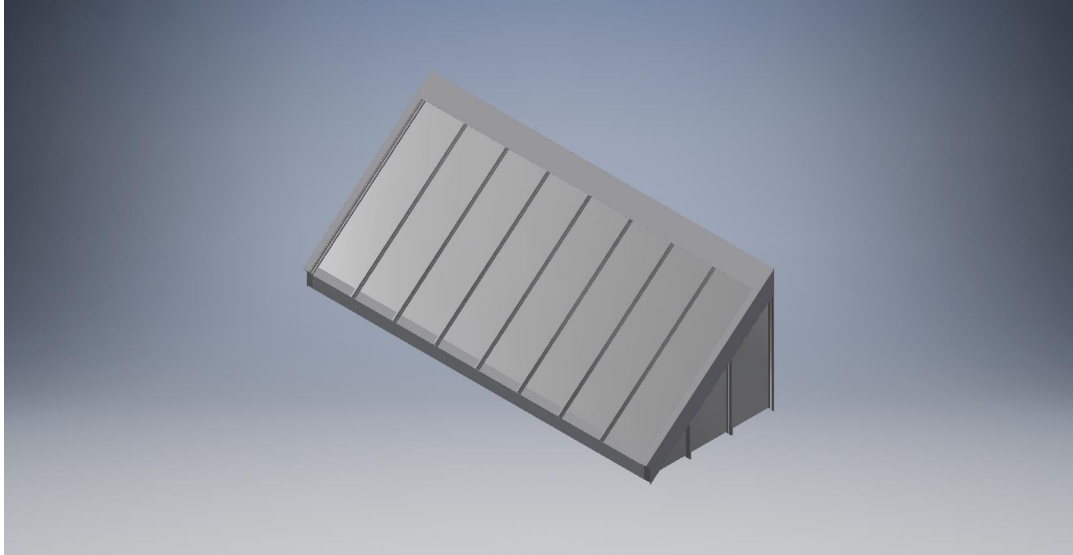


FRONT VIEW

**Call for any further details including but not limited to material, temper, thickness, paint and design.**



**LFS- TR Without Box**



# STANDING SEAM CANOPIES

## LFS - TR

**LAWRENCE**  
FABRIC & METAL STRUCTURES



**"YOUR IMAGINATION IS OUR VISION"**

Lawrence Fabric & Metal Structures, Inc || 3509 Tree Court Industrial Blvd., St. Louis, MO 63122  
Phone: (636)861-0100 || Fax: (636)861-0150 || Email: [sales@lawrencefabric.com](mailto:sales@lawrencefabric.com) || Web: [www.lawrencefabric.com](http://www.lawrencefabric.com)



An Employee Owned Company