

## Model: LFS-TR With Box

### Material:

- extruded aluminum frame
- substrate options:
  - flat aluminum sheet
  - standing seam steel
  - corrugated steel

### Fabrication Method:

- welded framework
- mechanically fastened sheeting

### Box height:

- custom height box: 2", 4", 6", 8", 10" 12"

### Fasteners:

- through bolt
- threaded rod with epoxy
- concrete anchor
- lag screws

### Underside Finish

- open (mill finish frame and substrate)
- soffit

### Finish:

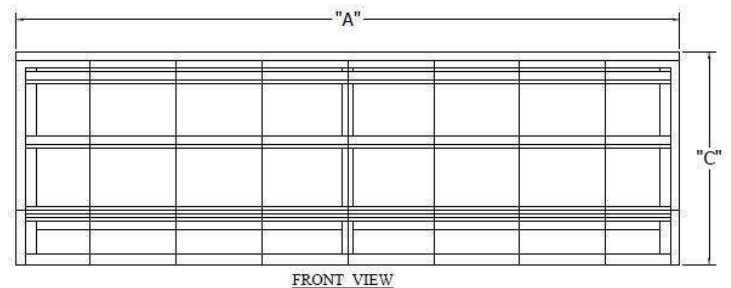
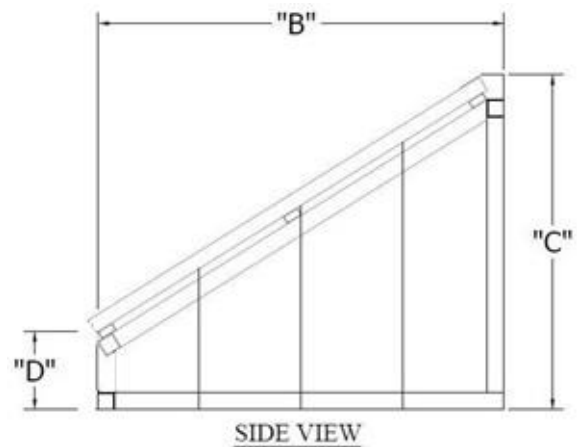
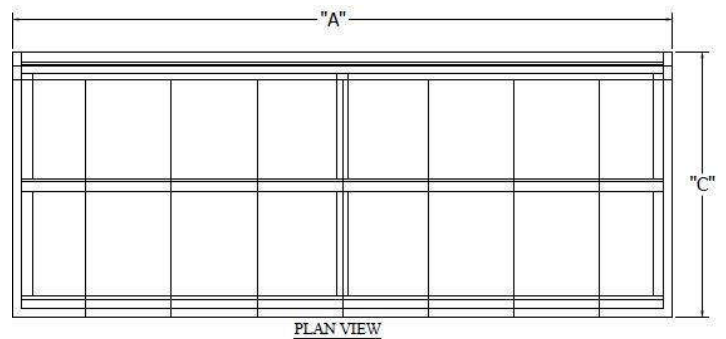
- 2-part Poly-Urethane paint (Aluminum Sheet & Frame)
- AAMA 2603 Powder Coat (Aluminum Sheet & Frame)
- AAMA 2604 Powder Coat (Aluminum Sheet & Frame)
- AAMA 2605 Powder Coat (Aluminum Sheet & Frame)
- Kynar Finish (Standing Seam and Corrugated Sheet Aluminum Sheet & Frame)

### Width:

- Unlimited

### Projection:

- 8' at 45° without posts
- over 8' with posts

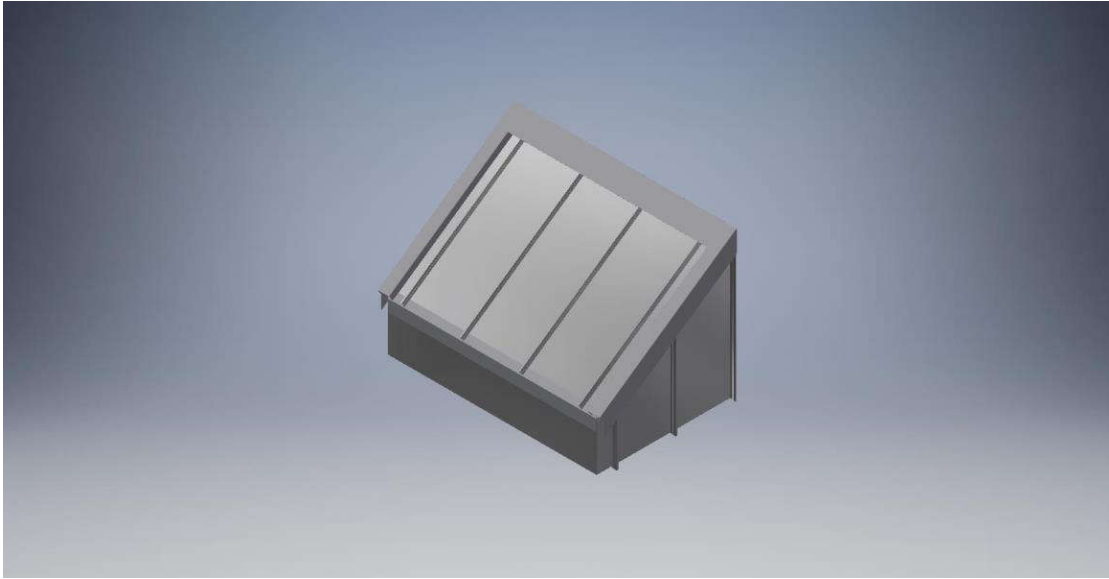


LFS TR - METAL  
(WITH BOX)

Call for any further details including but not limited to material, temper, thickness, paint and design.



**LFS-TR With Box**



# STANDING SEAM CANOPIES LFS - TR

**LAWRENCE**  
FABRIC & METAL STRUCTURES



**"YOUR IMAGINATION IS OUR VISION"**



Lawrence Fabric & Metal Structures, Inc || 3509 Tree Court Industrial Blvd., St. Louis, MO 63122  
Phone: (636)861-0100 || Fax: (636)861-0150 || Email: [sales@lawrencefabric.com](mailto:sales@lawrencefabric.com) || Web: [www.lawrencefabric.com](http://www.lawrencefabric.com)



An Employee Owned Company