

Material:

- extruded aluminum frame
- substrate options:
 - flat aluminum sheet
 - standing seam steel
 - corrugated steel

Fabrication Method:

- welded framework
- mechanically fastened sheeting

Fasteners:

- through bolt
- threaded rod with epoxy
- concrete anchor
- lag screws

Underside Finish

- open (millfinish frame and substrate)

Width:

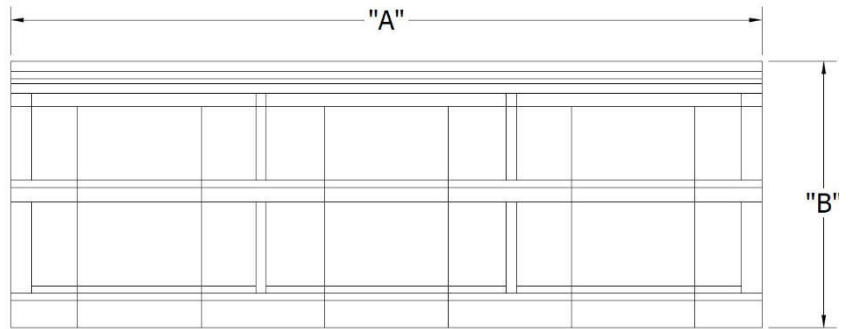
- unlimited

Finish:

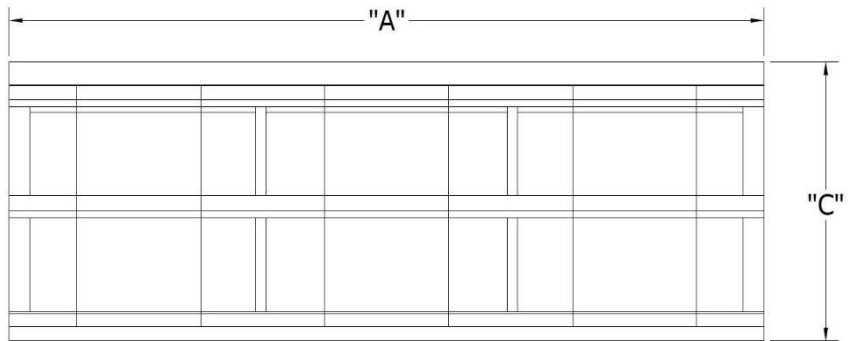
- 2-part Poly-Urethane Paint (Aluminum Sheet & Frame)
- AAMA 2603 Powder Coat (Aluminum Sheet & Frame)
- AAMA 2604 Powder Coat (Aluminum Sheet & Frame)
- AAMA 2605 Powder Coat (Aluminum Sheet & Frame)
- Kynar Finish (Standing Seam and Corrugated Sheet Aluminum Sheet & Frame)

Projection:

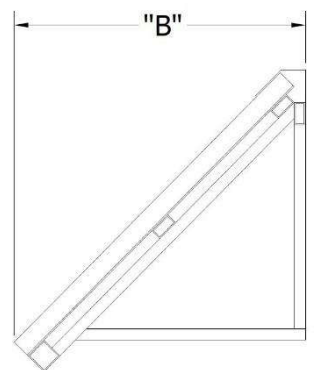
- up to 8' at 45° without posts
- > 8' requires support post



PLAN VIEW



FRONT VIEW

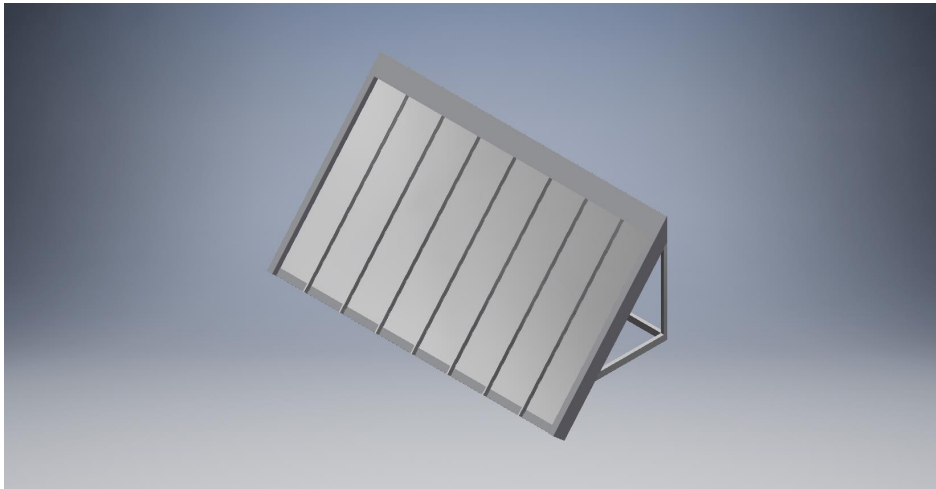


SIDE VIEW

Call for any further details including but not limited to material, temper, thickness, paint and design.



LFS-SLP



STANDING SEAM CANOPIES LFS - SLP

LAWRENCE

FABRIC & METAL STRUCTURES



"YOUR IMAGINATION IS OUR VISION"

Lawrence Fabric & Metal Structures, Inc || 3509 Tree Court Industrial Blvd., St. Louis, MO 63122
Phone: (636)861-0100 || Fax: (636)861-0150 || Email: sales@lawrencefabric.com || Web: www.lawrencefabric.com



An Employee Owned Company