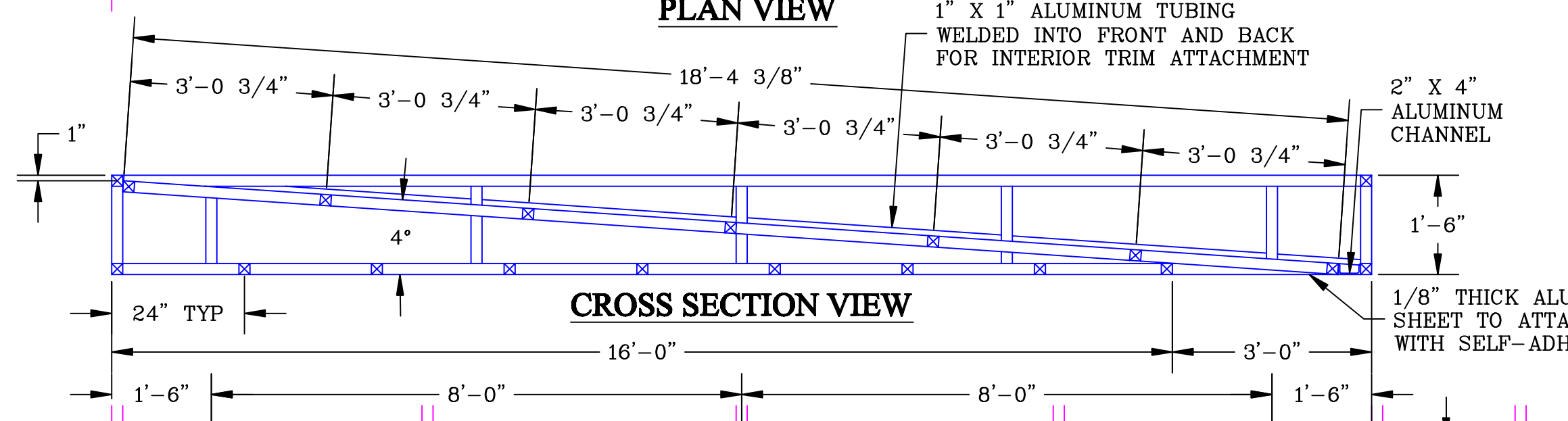
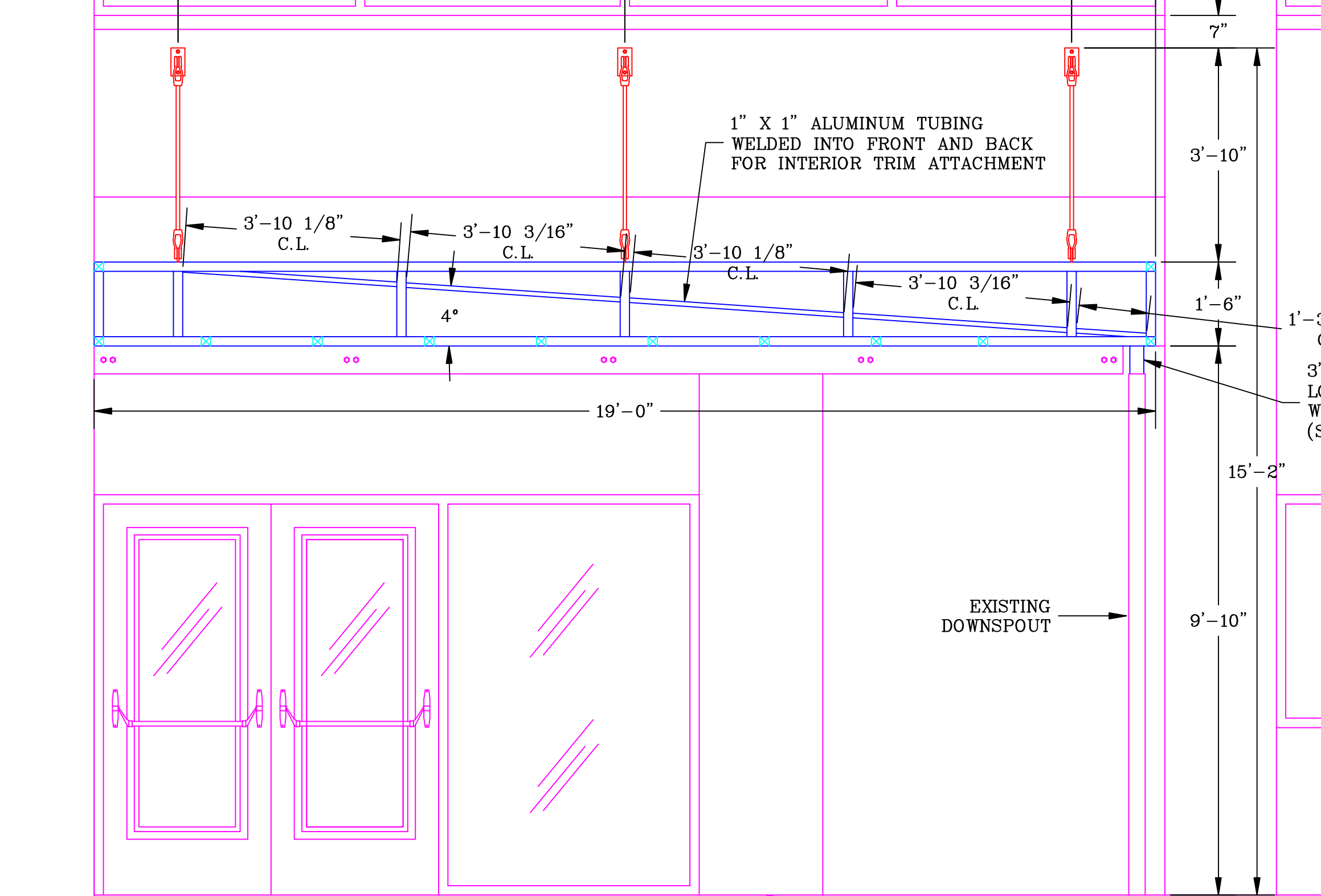


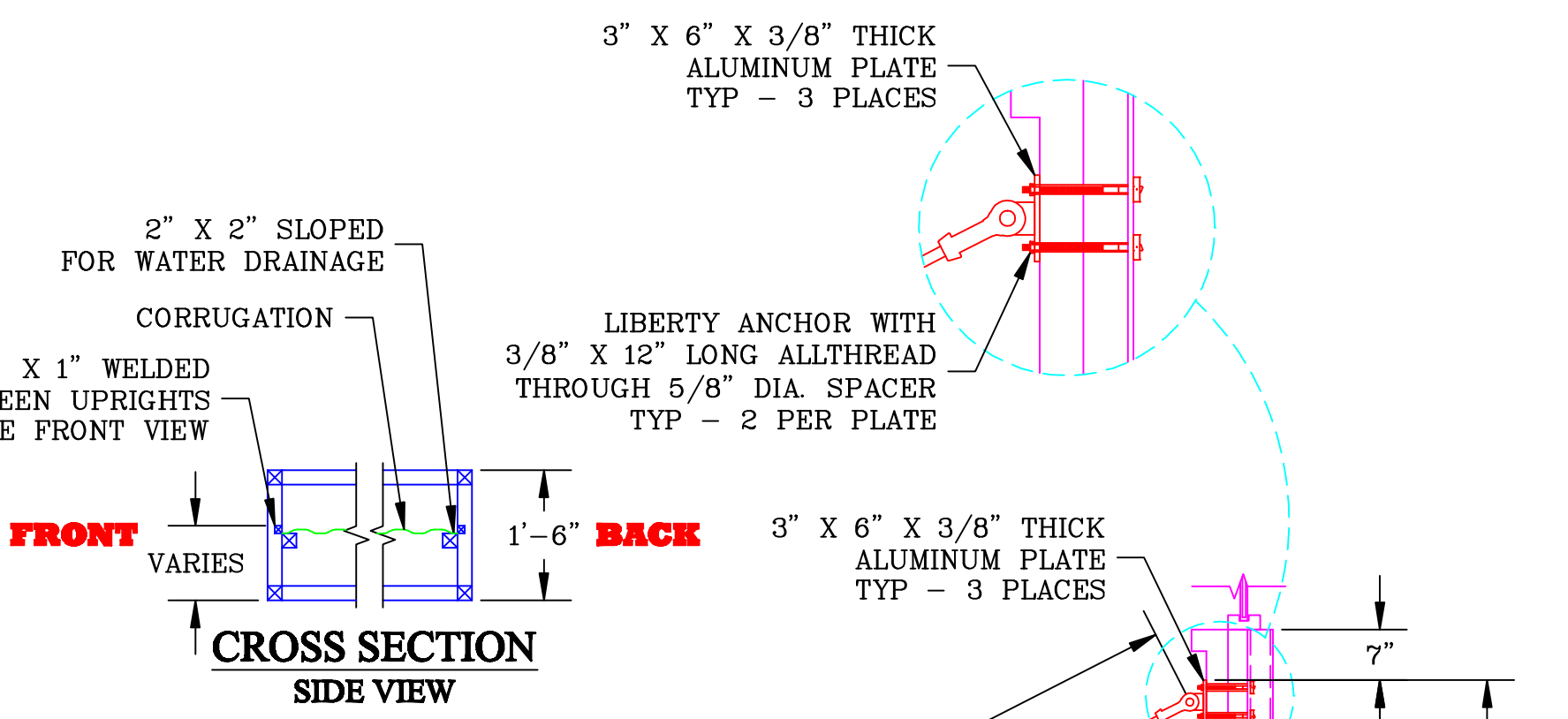
**PLAN VIEW**



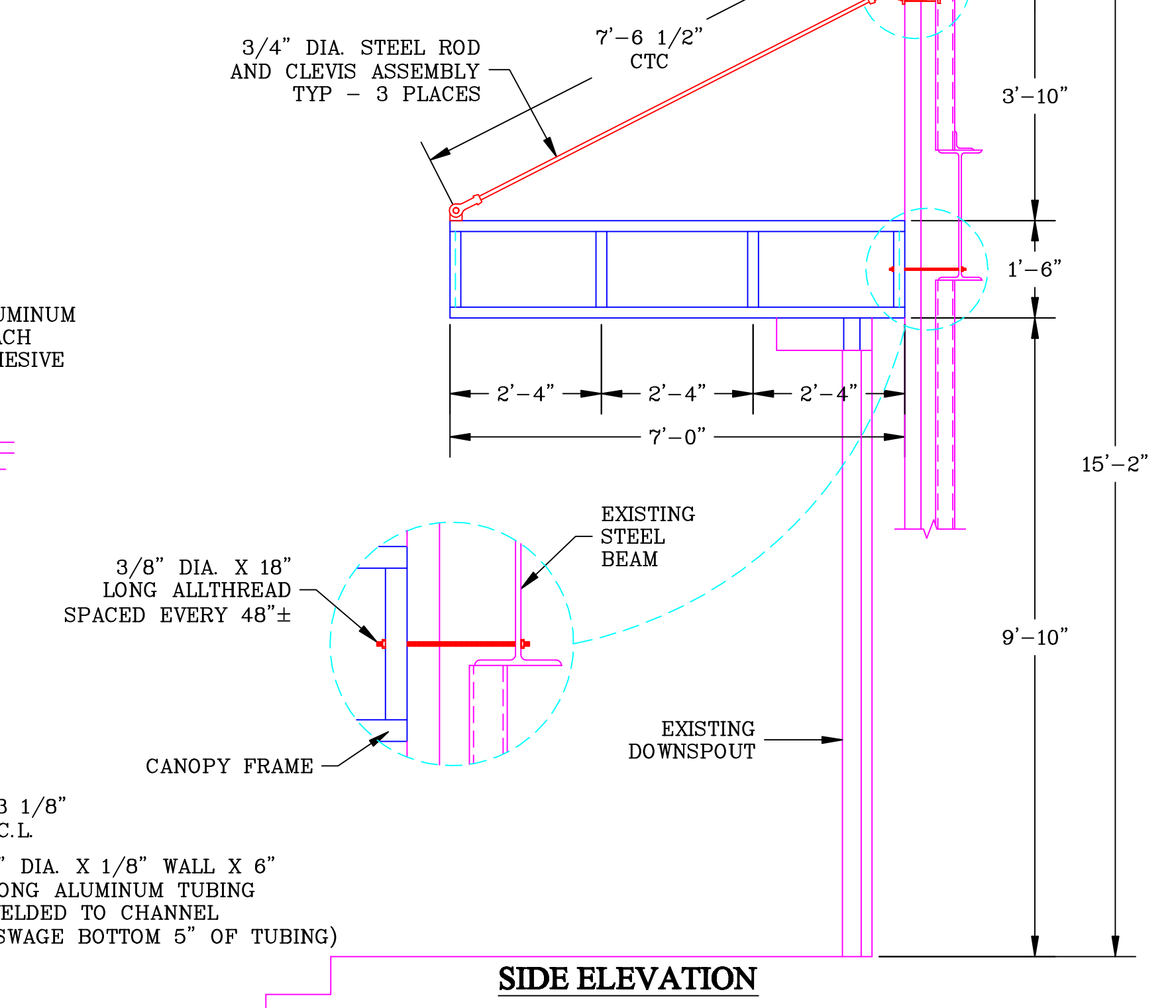
**CROSS SECTION VIEW**



**FRONT ELEVATION**



**CROSS SECTION SIDE VIEW**



**SIDE ELEVATION**

- NOTE:**
- (1) METAL CANOPY REQUIRED
  - ALL FRAMING TO BE 2" X 2" ALUMINUM TUBING
  - FRONT, SIDES AND BOTTOM OF CANOPY TO BE CLAD WITH 1/8" THICK ALUMINUM SHEET PAINTED LFS SILVER
  - SLOPED INNER FRAMING TO BE COVERED WITH M-COR CORRUGATED ROOFING PANELS IN GALVALUME COLOR
  - (3) 3/4" DIA. STEEL CLEVIS AND ROD ASSEMBLIES REQUIRED PAINTED LFS SILVER
  - CANOPY TO ALLOW WATER TO DRAIN INTO EXISTING DOWNSPOUT
  - CANOPY TO REST ON TOP OF EXISTING STEEL CHANNEL
  - SOFFIT LIGHTS BY OTHERS

<p><b>LAWRENCE</b> Fabric Structures Inc. 3509 Tree Court Industrial Blvd. St. Louis, Missouri 63122 636.861.0100 636.861.0150 fax</p>	CUSTOMER		LAKEVIEW CENTER 14500 S. OUTER 40 CHESTERFIELD, MO. 63017	
	DATE	DWG NO.	REV	SHEET
	1-23-09	228-6454	6	1 OF 1
	SCALE	DRAWN BY	LFS NO.	SIZE
1/2	P. LOUVIER	19659	C	