

Fabric Awnings

Standing Seam/  
Metal Clad

Tension  
Structures

Custom Lettering  
and Graphics

Commercial and  
Industrial  
Coverings

Exhibit  
Components

Tension  
Structures

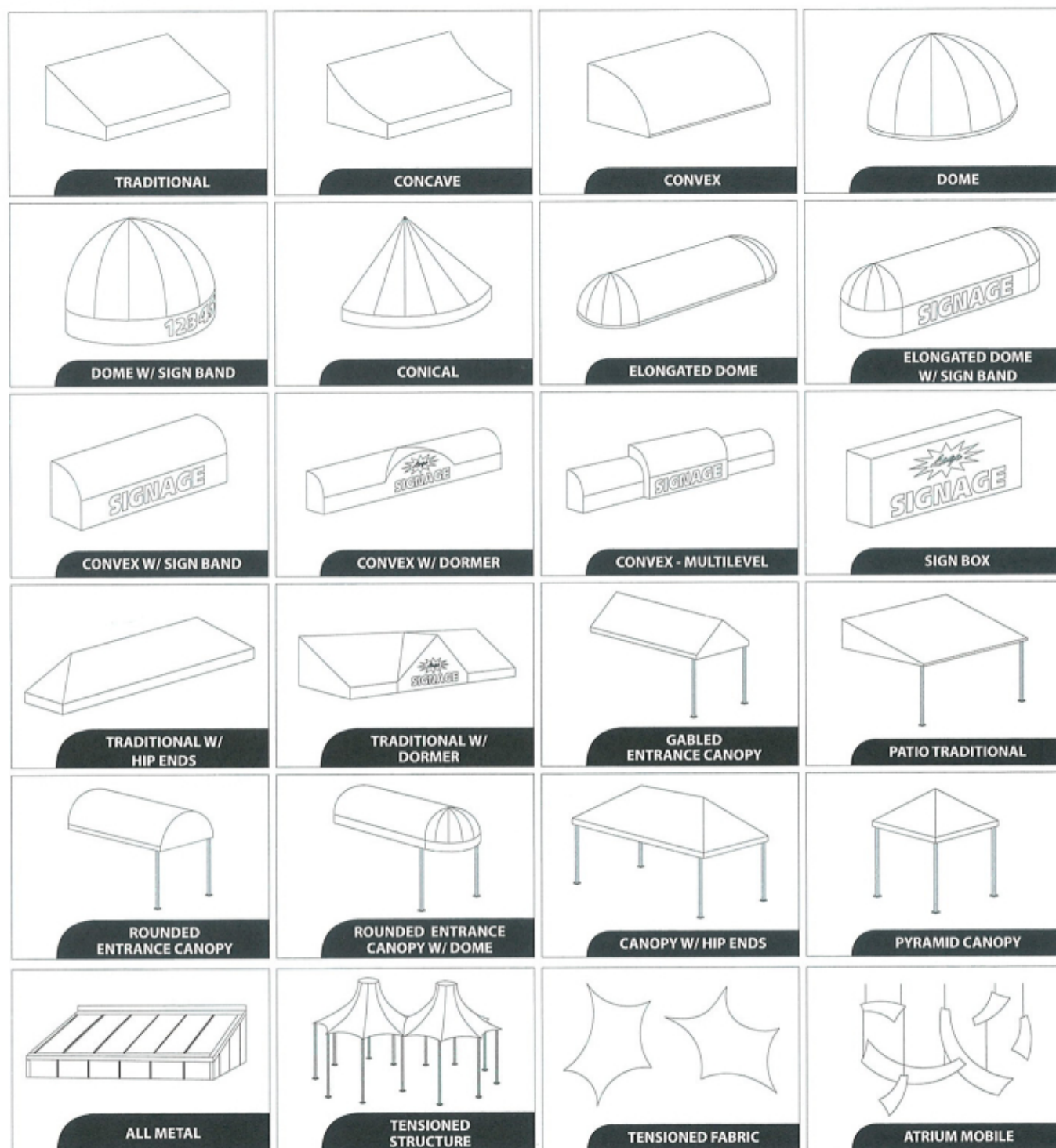
Banners

Automated  
Cutting &  
Patterning

# Typical Fabric Structure Specifications Guide



## Typical Designs



## Graphics

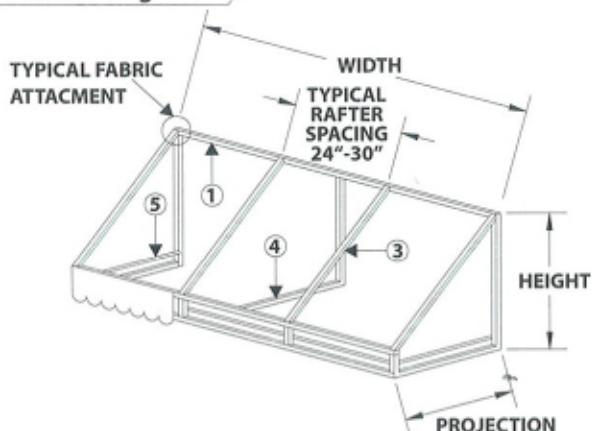
We use a variety of graphic techniques to achieve the desired look. Today's fabric structures can be enhanced with anything from simple lettering to custom printed patterns or digital printed photographs. Following is a list of common techniques available today:

- Stencil Painted
- Sunbrella Graphic System®
- R/F Welded
- Ink Jet Printed
- Eradicated
- Screen Printed
- Dye Sublimation
- Digital Printing
- Applied Vinyl Decals

# Frames

## TYPICAL SPECIFICATIONS

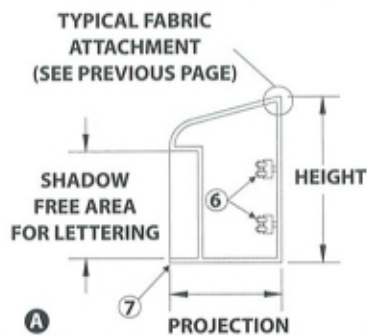
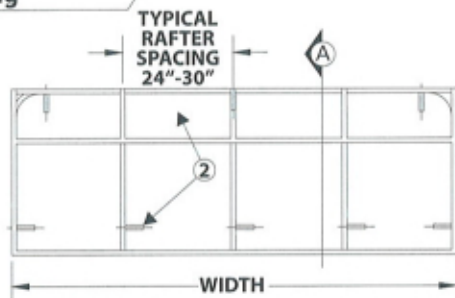
### Traditional Awning



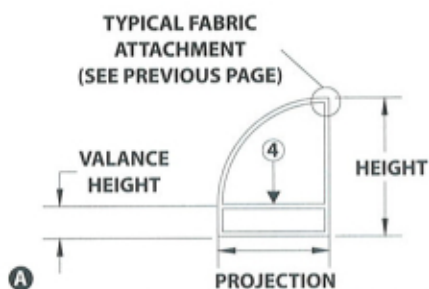
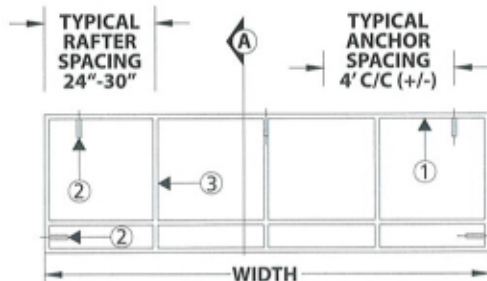
### Legend

1. TOP BAR
2. "Z" BRACKET
3. RAFTER
4. RETURNS, WHERE NEEDED
5. TIE BAR (LACE BAR)
6. HIGH OUTPUT, ZERO DEGREE, DAMP-LOCATION LIGHT FIXTURES
7. OPTIONAL EGG CRATE LIGHT DIFFUSERS

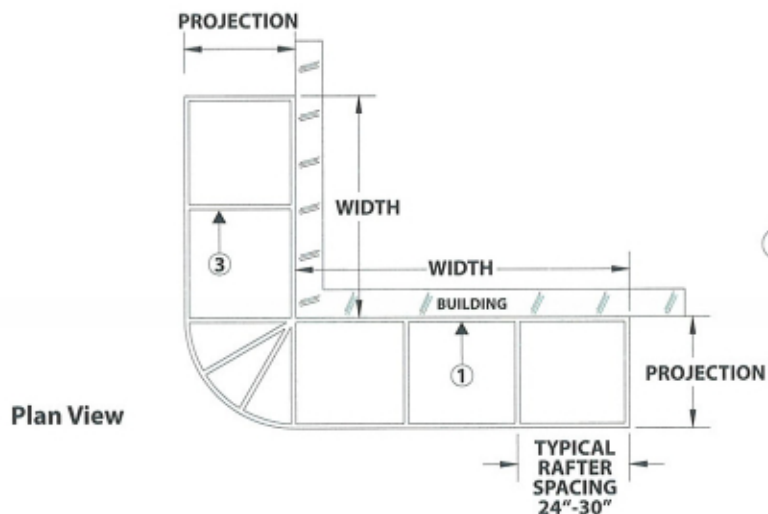
### Back-Lit Awning



### Convex Awning

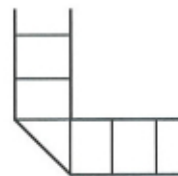


### Radiused Corner

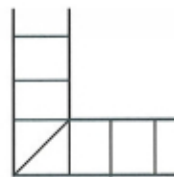


Plan View

### Mitered Corner



### Angled Corner



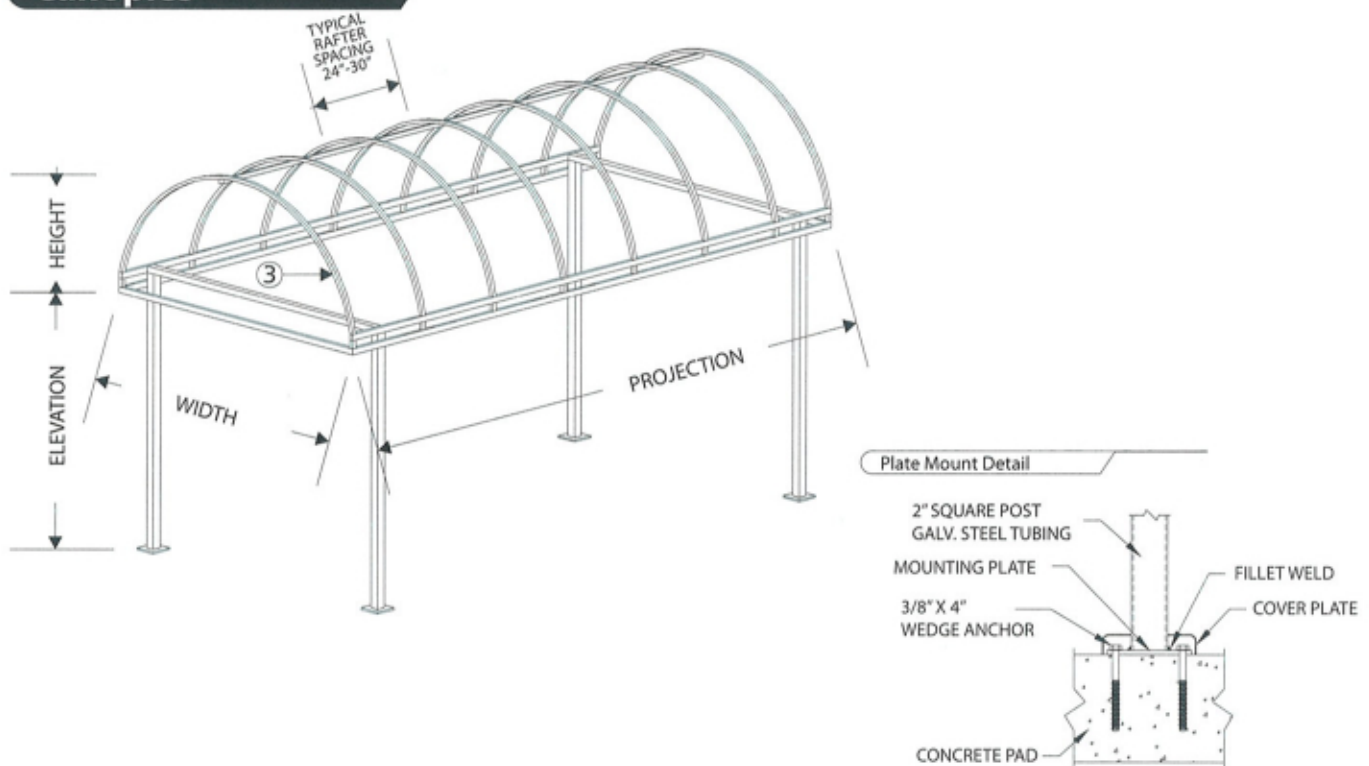


## Frames

All Lawrence awnings and canopies are custom made. The following information is to be used for detailing purposes. Frame size and rafter spacing may vary according to application and engineering requirements. Most frames (unless otherwise requested) are made with T6063 extruded aluminum.

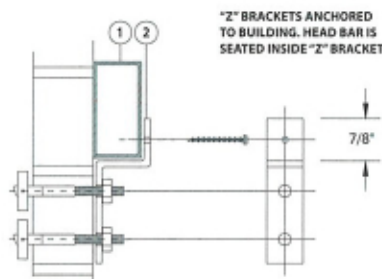
- ✓ Welded aluminum frames will not rust.
- ✓ Galvanized steel frames available when structurally necessary.
- ✓ Frames by Lawrence Fabric Structures are warranted for 5 years against defects in materials & workmanship.
- ✓ Frames can be painted with epoxy coatings at customer's request. Painting of aluminum or galvanized frames is for appearance only and is not necessary to improve frame quality.

## Canopies

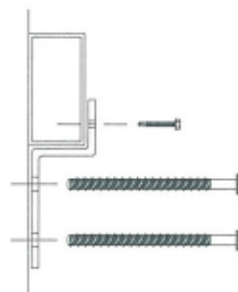


## Mounting Methods

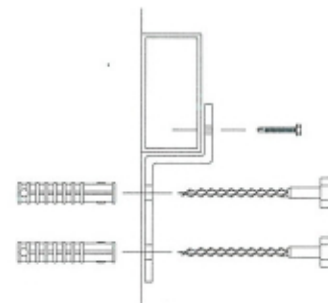
### Toggle Bolt Mount



### Wedge Bolt Mount



### Lag Shield Mount



## Fabrics

## TYPICAL SPECIFICATIONS

At Lawrence Fabric Structures we stay informed of the latest advances in the fabric industry by actively participating in the Industrial Fabrics Association International. New fabrics and fibers are rapidly entering the market, improving the appearance, strength, and life of every product we manufacture. We will help you determine the best fabric solution for your particular project. Some of the most common choices are as follows:

**Acrylic Fabrics** - are made of 100% acrylic solution dyed fabrics, with a fluorocarbon finish. Acrylics are extremely resistant to color and strength loss due to ultraviolet exposure. They are warranted against any fading for a period of five years, under normal exposure conditions.

Acrylics are by far the most recommended and most often used fabrics in our Midwestern areas. Acrylic trade names include Sunbrella and Dickson.

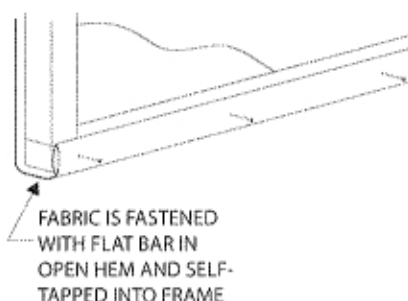
**Back-Lit Awning Fabrics** - are any of a group of vinyl coated or laminated fabrics specially formulated for backlighting. They are unique due to the special pigmentation in the vinyl material that allow these fabrics to be translucent and light up at night. These fabrics are fire retardant, and generally more costly than other awning fabrics. A few of the most common trade names are: Awnlit, Premier, Awnmax, 3M Panaflex, Eradilite, Nitelite and Benchmark. Various methods of using graphics with these fabrics can greatly affect the cost of back-lit awning projects.

**Vinyl Laminates** - are tri-layer fabrics. Top and bottom layers are vinyl; the interior is a woven polyester or nylon scrim. Weights usually range from 14 to 18 oz. per square yard. They are resistant to abrasion, tears, water, mildew, and ultraviolet light. Flame retardancy is inherent in vinyl laminates, and it has excellent dimensional stability. Major advantages are ease in cleaning and a high degree of strength. The disadvantage is that some people prefer a "Fabric" or "soft cloth" appearance over vinyl. Common trade names are: Weblon, Ferrari, Patio, ProTec and Nazil. These fabrics accept various forms of graphics.

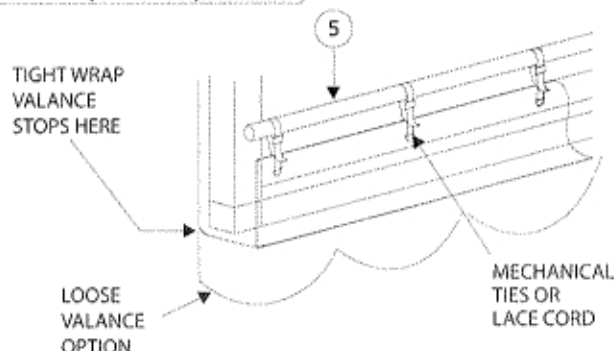
**Acrylic Coated Polyester Fabrics** - are the latest generation of coated awning fabrics. Known for their smooth surface and sharp appearance, these materials are resistant to dirt build-up, and will not stretch or leak. They also offer a high level of fade resistance. They are lightweight - from 9oz. to 15oz. - and accept a variety of graphic applications. Warranted for five years, the acrylic coated polyester fabrics include Mainstreet, Event Banner and Avenue.

## Fabric Attachment

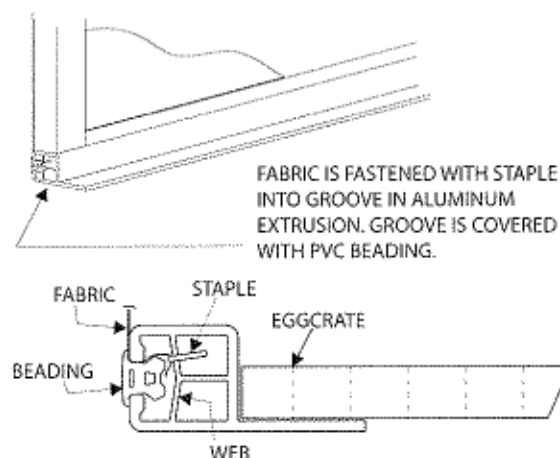
### Open Hem / Self Tap



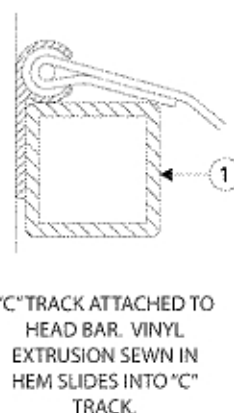
### Tie Bar (Lace Bar)



### Staple



### "C" Track



## Stock Metal Goods

Most frames are made with 1" & 2" aluminum tubing. Other tubing types are available as size and load limits require.

- A. 1" x 1" x .075 wall
- B. 1" x 2" x .100 wall
- C. 1 1/4" x 3" x .125 wall
- D. 1 1/2" x 1 1/2" x .125 wall

- E. 1 3/4" x 1 3/4" x .125 wall
- F. 2" x 2" x .093 wall
- G. 2 1/2" x 2 1/2" x .188 wall

- G. 1/2" round x .088 wall
- H. 2 1/2" round SCH. 40 STEEL
- I. 2" x 3" x .125 wall STEEL

## Valance

## SCALLOP CUTS

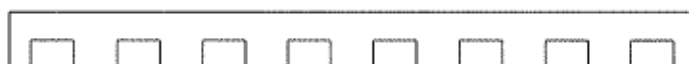
**Straight**



**Standard Circular**



**Keyhole**



**Shallow Notched**



**Wave**



**Half Circle**



**Deep Notched**



Variations of the above scallop cuts can be produced. Painted trim can also be added to customize the design.

## Quality Assurance

GUARANTEES - are for normal sun and wind conditions.

FRAME - Five years for workmanship and rust and corrosion resistance.

FABRIC - Manufacturer's mill warranties vary from three to eight years.

SEWING - Three year warranty on seams and thread.

More important than these stated warranties is the over SIXTY FIVE YEARS of customer service and satisfaction that Lawrence Fabric Structures has provided. We are very proud of our reputation as a leader in our industry, both in product quality and customer satisfaction.



Fabric Structures Inc.

3509 Tree Court Industrial Blvd. • St. Louis, Missouri 63122  
(636) 861-0100 • (800) 527-3840 • Fax (636) 861-0150