



MODEL: LFS-FLV

**Application**

Lawrence's LFS-FLV sunshade canopy has a unique design that reduces the amount of direct sunlight, heat and glare, yet allows natural light to enter your building. All our canopies can be customized to match your unique project.

**LFS-FLV Specifications:**

**Material:**

- extruded aluminum

**Fabrication Method:**

- welded

**Finish:**

- 2-part polyurethane paint
- powder coated
- Kynar finish available upon request

**Decking:**

- aluminum louvered blades

**Standard Fascia Profile:**

- 8" and 12" gutter fascia
- over 12" requires upper or lower extension

**Channel Fascia Profile**

- 8" and 12" gutter fascia

**Gutter Beam**

- interior alum tube
- scupper (optional)
- downspouts (optional)

**Width:**

- unlimited
- sections of 24'0" max

**Support (optional)**

- .750" or 1" dia. stainless steel rod
- 6" x 6" aluminum, galvanized or stainless steel plate
- 10'-0" max spacing

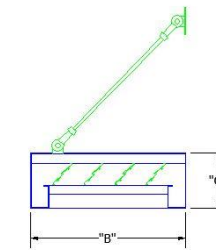
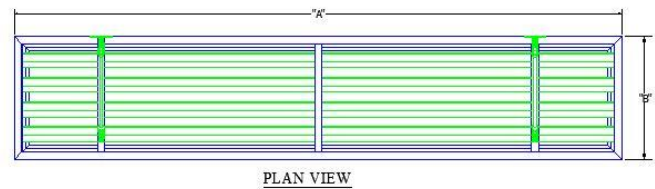
**Underside Finish**

- open to extruded blades

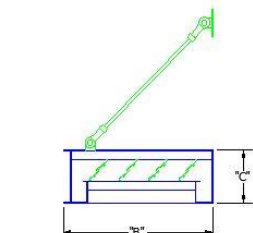
**Projection:**

- 2' typical without hanger rods  
Please inquire if a greater projection is needed
- 10' typical with hangar rods  
Please inquire if a greater projection is needed.

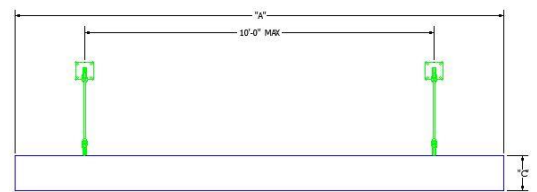
**Call for any further details including but not limited to material, temper, thickness, paint and design.**



CROSS SECTION VIEW  
STANDARD OPTION



CROSS SECTION VIEW  
CHANNEL FLANGE OPTION

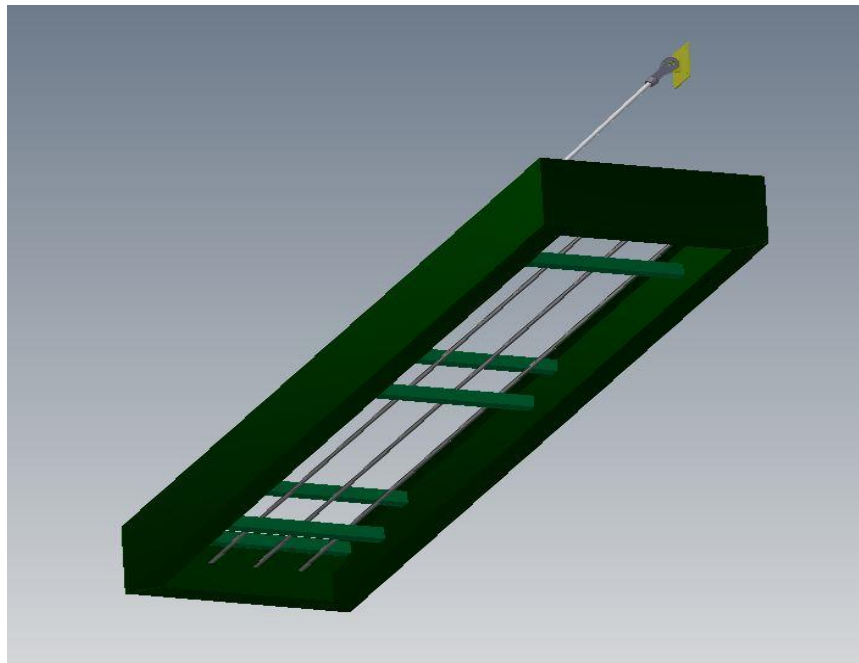
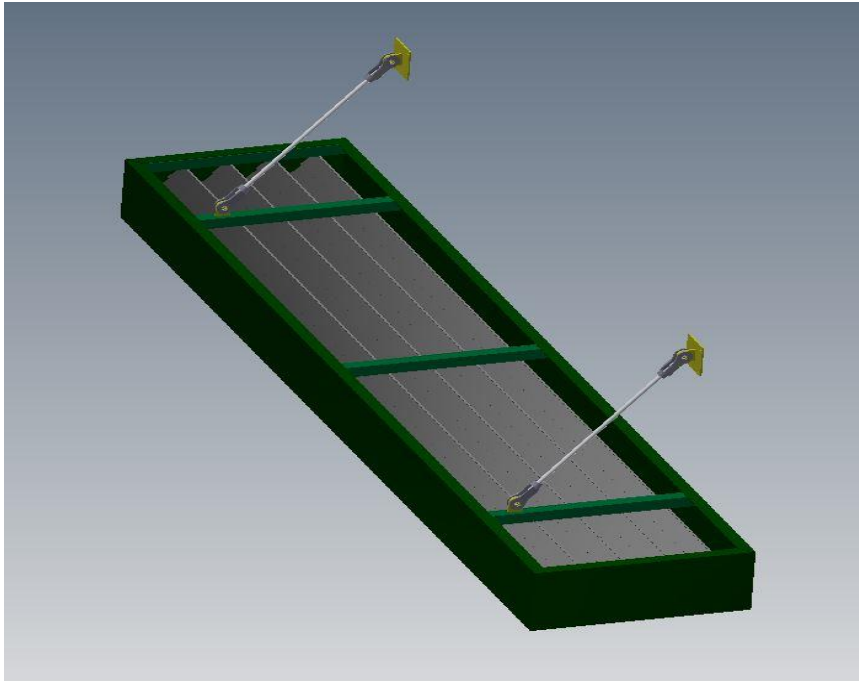


FRONT VIEW

MODEL: LFS-FLV



Standard



MODEL: LFS-FLV



## **Lawrence Fabric & Metal Structures LFS-FLV Metal Sunshade**

### **Part 1: General**

#### 1.1 Description of Work

A. Work in this section includes furnishing and installation of extruded aluminum sunshade style canopies as manufactured by Lawrence Fabric and Metal Structures, Inc.

#### B. Related Items and Considerations

1. Flashing of various designs may be required. Supplied as required.
2. Determine wall construction, make-up, and thickness.
3. Ensure adequate wall condition to carry sunshade canopy loads required.
4. Consider water drainage away from sunshades where necessary.
5. Any necessary removal or relocation of existing structures, obstructions or materials.

Materials to be determined.

#### 1.2 Quality Assurance

A. Products meeting specification standards of quality required as manufactured by Lawrence Fabric and Metal Structures, Inc. St. Louis, MO 1-800-527-3840.

B. ISO Certification required.

#### 1.3 Field Measurement

A. Confirm dimensions prior to preparation of shop drawings if at all possible.

B. If requested, supply manufacturer's standard literature and specifications for sunshades.

C. Submit shop drawings showing structural component locations/positions, materials, dimensions, and details of construction, as well as assembly.

#### 1.4 Performance Requirements

A. Sunshade canopy must conform to local building codes.

B. Determine if specific load requirements have been established for sunshades and if stamped calculations are required for location in which sunshade is installed.

#### 1.5 Deliver, Storage, Handling

A. Deliver and store all sunshade canopy components in protected areas.

### **Part 2: Products**

#### 2.1 Manufacturer

- A. Lawrence Fabric and Metal Structures, Inc. LFS-FLV Sunshade (no substitutions)  
3509 Tree Court Industrial Blvd.  
St. Louis, MO, 63122  
Phone: 1-800-527-3840.  
Fax: 1-636-861-0150  
sales@lawrencefabric.com

#### 2.2 Materials

A. L-7 #31-63-100 louver blades shall be extruded aluminum, alloy 6063-T6 and .081" in thickness.

B. Intermediate members shall be extruded aluminum alloy 6063-T6 tubing.

C. Hanger rods and attachment hardware shall be finished to match sunshade if needed.

D. Fascia shall be standard 8" or 12" extruded "G" style gutter in .125" thick aluminum. Gutter is also available with external channel design fascia extrusion.

### 2.3 Finishes

- A. Standard factory finish is two-part epoxy polyurethane paint finish.
- B. Optional finishes include powder coating and Kynar colors.

### 2.4 Fabrication

- A. All louver members shall be welded to gutter fascia. The perimeter gutter fascia will be welded as one piece or in sections, depending on width of sunshade. All sunshades to be shipped in welded pre-assembled sections for ease of installation.
- B. All intermediate tubing connections shall be welded to gutter fascia to provide structural integrity to the completed assembly.
- C. Concealed drainage. Water shall drain from integral gutter fascia and be directed to either the front for front scupper drainage or to the rear for ground level discharge via one or more designated downspouts.

## **Part 3: Execution**

### 3.1 Inspection

- A. Confirm that surrounding area is ready for sunshade installation.
- B. Installer shall confirm dimensions and elevations to be as shown on drawings provided by Lawrence Fabric and Metal Structures, Inc.
- C. Erection shall be performed by an approved installer and scheduled after all concrete, masonry and roofing in the area is completed.

### 3.2 Installation

- A. Installation shall be in strict accordance with LFS shop drawings. Particular attention should be given to protecting the finish during handling and erection.
- 3.3 After installation, entire system shall be left in a clean condition.

**Note: Listing above is standard design. Options available to build to intended design.**