

Model: LFS-FLV

**Material:**

- extruded aluminum

**Fabrication Method:**

- welded

**Standard Fascia Profile:**

- 8" and 12" gutter fascia & 10" (Inquire)
- 2" x 6", 8", 10", 12" rectangular tubing fascia
- over 12" requires upper or lower extension

**Channel Fascia Profile**

- 8" and 12" gutter fascia (10" inquire)

**Blades:**

- Tubing, Flatstock, Z blades and Airfoils (many different sizes and shapes available).
- Blade spacing can be customized

**Width:**

- unlimited
- sections of 24'0" max

**Support (optional)**

- .750" or 1" dia. stainless steel rod
- 6" x 6" aluminum, galvanized or stainless-steel plate
- 10'-0" max spacing

**Underside Finish**

- open to extruded blades

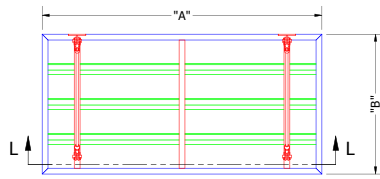
**Finish :**

- AAMA 2603 Compliant Powder Coat 1 yr warranty
- AAMA 2604 Compliant Powder Coat 5 yr warranty
- AAMA 2605 Compliant Finish 10 yr warranty
- AAMA 2604 Compliant Special Wood Grain
- 2-part Polyurethane Factory Applied Finish
- Kynar Finish Available Upon Request

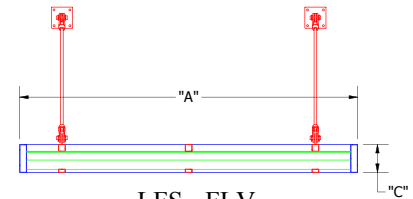
**Projection :**

- 2' typical without hanger rods. Please inquire if a greater protection is needed
- 10' typical with hanger rods. Please inquire if a greater protection is needed

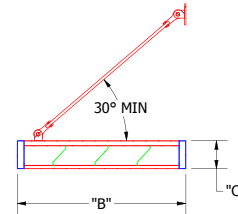
Call for any further details including but not limited to material, temper, thickness, paint and design.



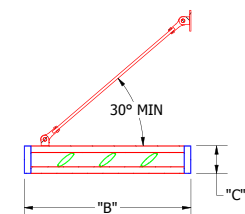
LFS - FLV  
PLAN VIEW



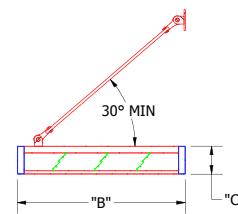
LFS - FLV  
FRONT SECTION VIEW



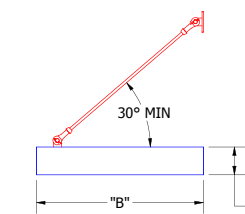
LFS - FLV  
SIDE SECTION VIEW  
L-1 LOUVER



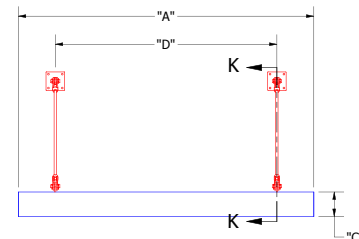
LFS - FLV  
SIDE SECTION VIEW  
6" AIRFOIL LOUVER



LFS - FLV  
SIDE SECTION VIEW  
L-7 LOUVER



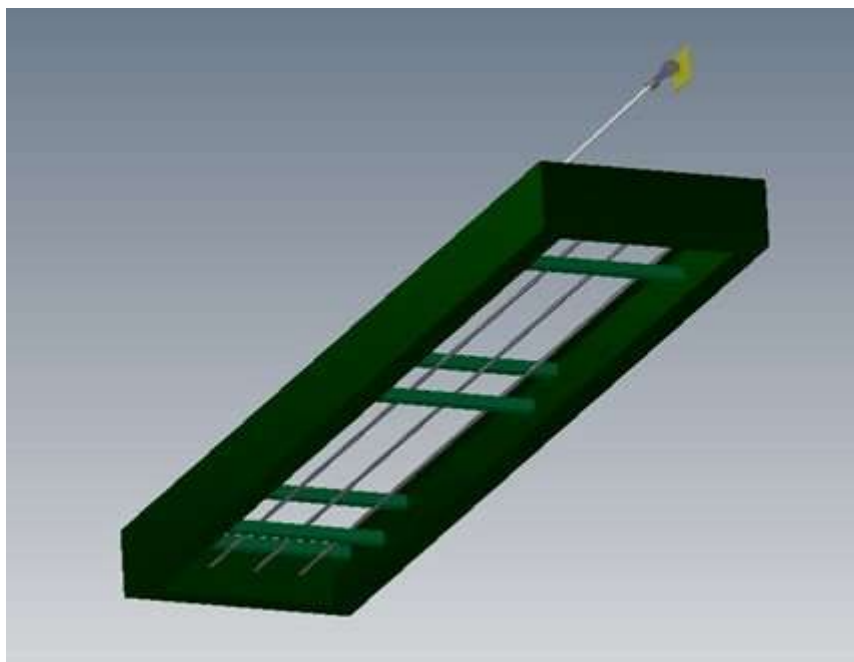
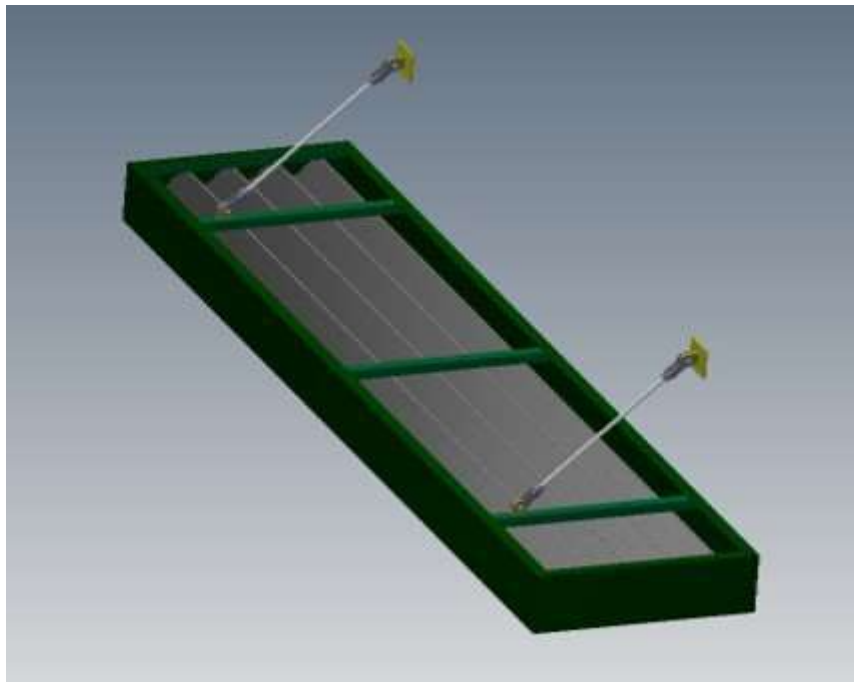
LFS - FLV  
SIDE VIEW



LFS - FLV  
FRONT VIEW



# LFS-FLV



# LOUVERED METAL CANOPIES LFS - FLV

**LAWRENCE**  
FABRIC & METAL STRUCTURES



**"YOUR IMAGINATION IS OUR VISION"**



Lawrence Fabric & Metal Structures, Inc || 3509 Tree Court Industrial Blvd., St. Louis, MO 63122  
Phone: (636)861-0100 || Fax: (636)861-0150 || Email: [sales@lawrencefabric.com](mailto:sales@lawrencefabric.com) || Web: [www.lawrencefabric.com](http://www.lawrencefabric.com)



An Employee Owned Company