

LAWRENCE

FABRIC & METAL STRUCTURES

Model: LFS-FLV

Material:

- extruded aluminum

Fabrication Method:

- welded

Standard Fascia Profile:

- 8" and 12" gutter fascia & 10" (Inquire)
- 2" x 6", 8", 10", 12" rectangular tubing fascia
- over 12" requires upper or lower extension

Channel Fascia Profile

- 8" and 12" gutter fascia (10" inquire)

Blades:

- Tubing, Flatstock, Z blades and Airfoils (many different sizes and shapes available).
- Blade spacing can be customized

Width:

- unlimited
- sections of 24'0" max

Support (optional)

- .750" or 1" dia. stainless steel rod
- 6" x 6" aluminum, galvanized or stainless-steel plate
- 10'-0" max spacing

Underside Finish

- open to extruded blades

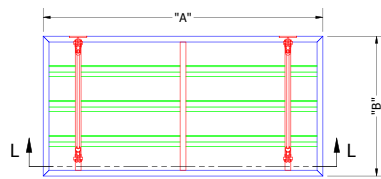
Finish :

- AAMA 2603 Compliant Powder Coat 1 yr warranty
- AAMA 2604 Compliant Powder Coat 5 yr warranty
- AAMA 2605 Compliant Finish 10 yr warranty
- AAMA 2604 Compliant Special Wood Grain
- 2-part Polyurethane Factory Applied Finish
- Kynar Finish Available Upon Request

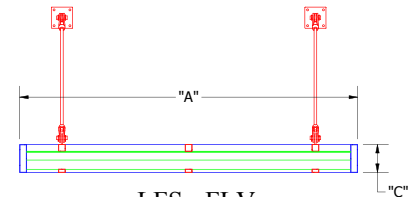
Projection :

- 2' typical without hanger rods. Please inquire if a greater projection is needed
- 10' typical with hanger rods. Please inquire if a greater projection is needed

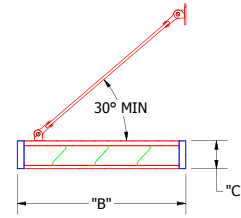
Call for any further details including but not limited to material, temper, thickness, paint and design.



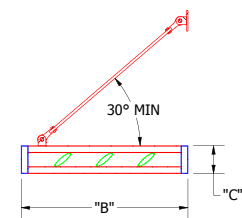
LFS - FLV
PLAN VIEW



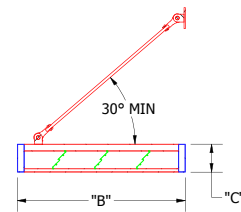
LFS - FLV
FRONT SECTION VIEW



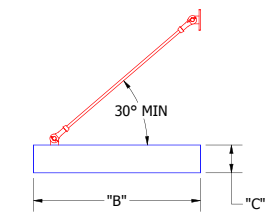
LFS - FLV
SIDE SECTION VIEW
L-1 LOUVER



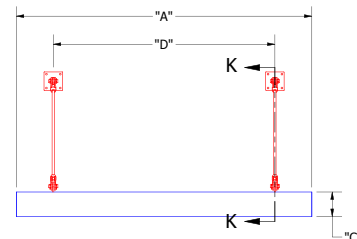
LFS - FLV
SIDE SECTION VIEW
6" AIRFOIL LOUVER



LFS - FLV
SIDE SECTION VIEW
L-7 LOUVER



LFS - FLV
SIDE VIEW



LFS - FLV
FRONT VIEW

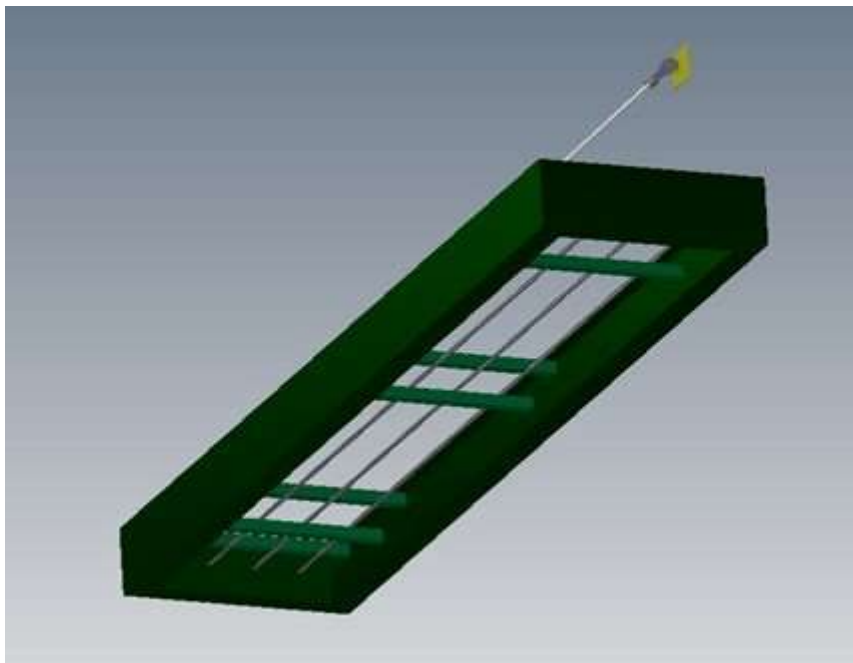
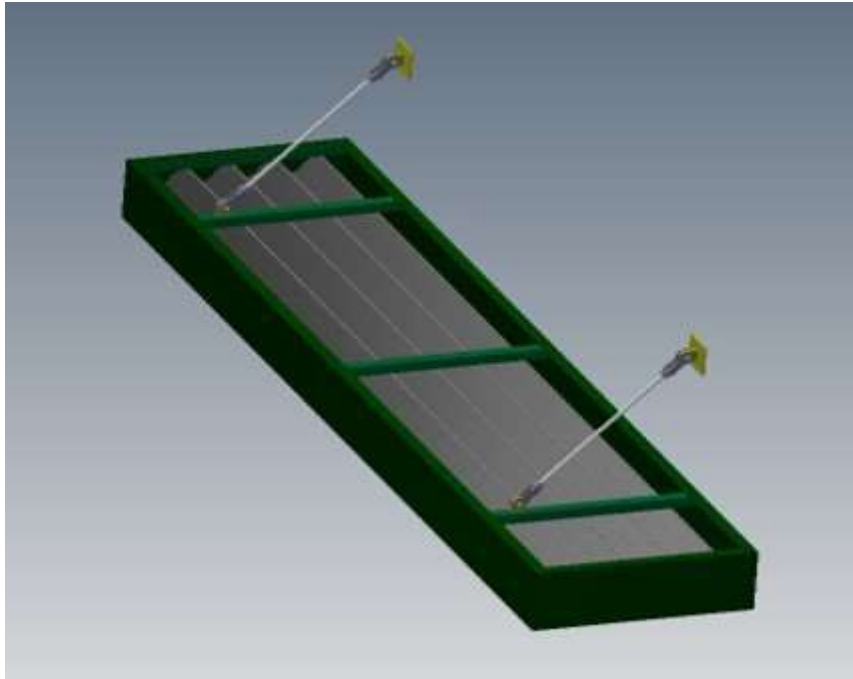


Lawrence Fabric & Metal Structures, Inc. || 3509 Tree Court Industrial Blvd., St. Louis, MO 63122
Phone: (636) 861-0100 || Fax: (636) 861-0150 || Email: sales@lawrencefabric.com || Web: www.lawrencefabric.com



An Employee Owned Company

LFS-FLV



LOUVERED METAL CANOPIES LFS - FLV

LAWRENCE
FABRIC & METAL STRUCTURES



"YOUR IMAGINATION IS OUR VISION"



Lawrence Fabric & Metal Structures, Inc || 3509 Tree Court Industrial Blvd., St. Louis, MO 63122
Phone: (636)861-0100 || Fax: (636)861-0150 || Email: sales@lawrencefabric.com || Web: www.lawrencefabric.com



An Employee Owned Company